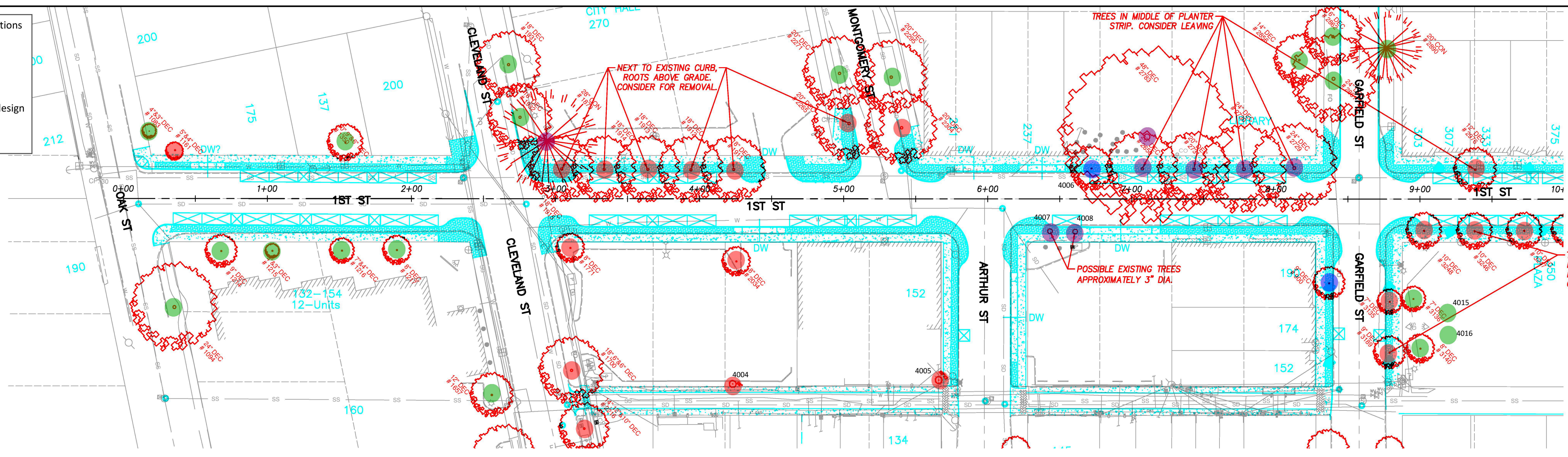
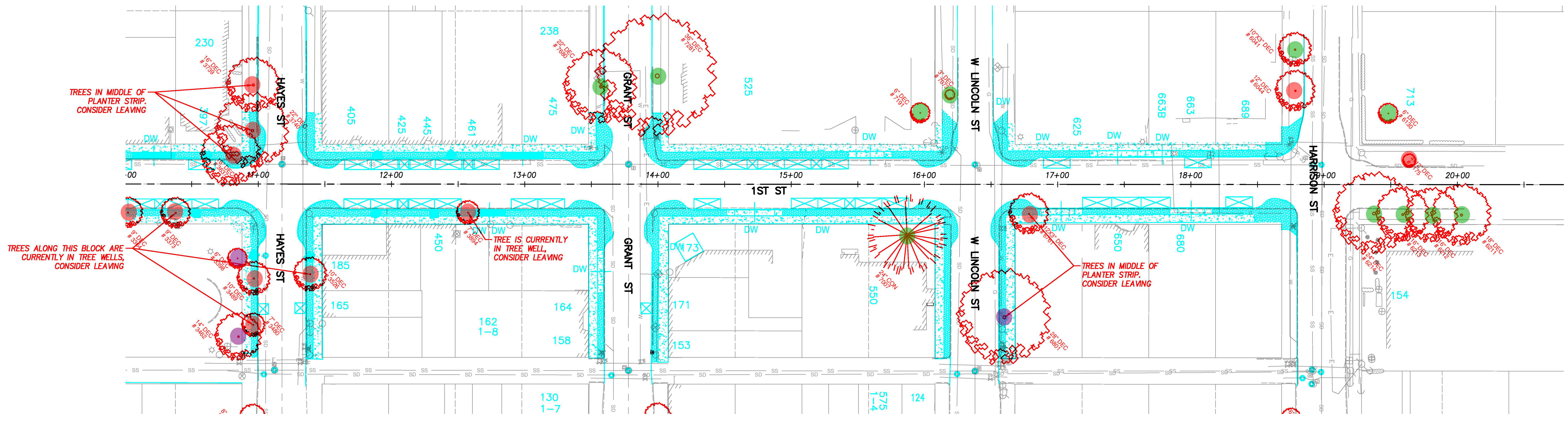


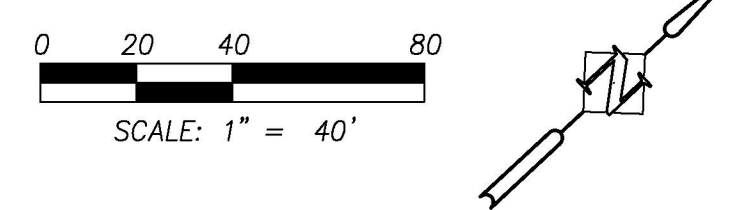
- Preliminary Recommendations**
- Remove
 - Retain
 - Retain with modified design
 - Omit from survey



PLAN VIEW – FIRST STREET – STA 0+00 TO STA 10+00

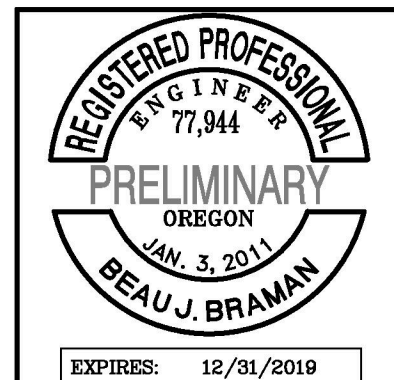


PLAN VIEW – FIRST STREET – STA 10+00 TO STA 20+50



DATE	NO.	DESCRIPTION
R E V I S I O N S		

DESIGNED:	BJB
DRAWN:	KOP
CHECKED:	BJB
DATE:	MAY 2018



Harper Houf Peterson Righellis Inc.
 ENGINEERS • PLANNERS
 LANDSCAPE ARCHITECTS • SURVEYORS
 205 SE Spokane Street, Suite 200, Portland, OR 97202
 phone: 503.221.1131 www.hhpr.com fax: 503.221.1171

**EXISTING TREE INVENTORY
 FIRST STREET IMPROVEMENTS
 WOODBURN, OREGON**

SHEET NO.	1	OF	1
JOB NO.	WBN-05		

P:\WBN (City of Woodburn)\WBN-05 (First Street Improvements)\WBN-05-DWG\SHEETS\WBN-05 - TREE INVENTORY.dwg