



City of Woodburn
Community Development Dept.

Memorandum

270 Montgomery Street

Woodburn, Oregon 97071

Phone (503) 982-5246

Fax (503) 982-5244

Date: June 9, 2022
To: Interpretations file
Through: Chris Kerr, AICP, Community Development Director
From: Colin Cortes, AICP, CNU-A, Senior Planner *CC*
Subject: **Interpretation:** Bus Transit Improvement Specifications (INT 22-0609)

Background

Following Ordinance No. 2602 (Legislative Amendment LA 21-01), Woodburn Development Ordinance (WDO) 3.01.09 "Bus Transit Improvements" in subsection 3.01.09D establishes that bus stop improvements where required are per the Community Development Director.

Specifications

This memo establishes most of the improvement specifications.
Abbreviations: "ft" = feet, "min" = minimum, "max" = maximum.

D1. Bus shelter pad:

The minimums of the area that a legal instrument provides for a bus shelter and pad are:

- a. Poured concrete.
- b. Min width 12 ft parallel to the street, 7 ft width perpendicular, and 6 inches deep.
- c. Setback: Set back the shelter min 6 inches from sidewalk edge. Setback applies also to any front protrusion that is below the roofline.

D2. Bus shelter:

- a. The City specification model is [Handi-Hut® model #4-2D](#) dome roof passenger shelter. The cut or spec sheets are attached; first sheet excerpted below:
- b. Setback: Set back the shelter min 6 inches from sidewalk edge. Setback applies also to any front protrusion that is below the roofline.

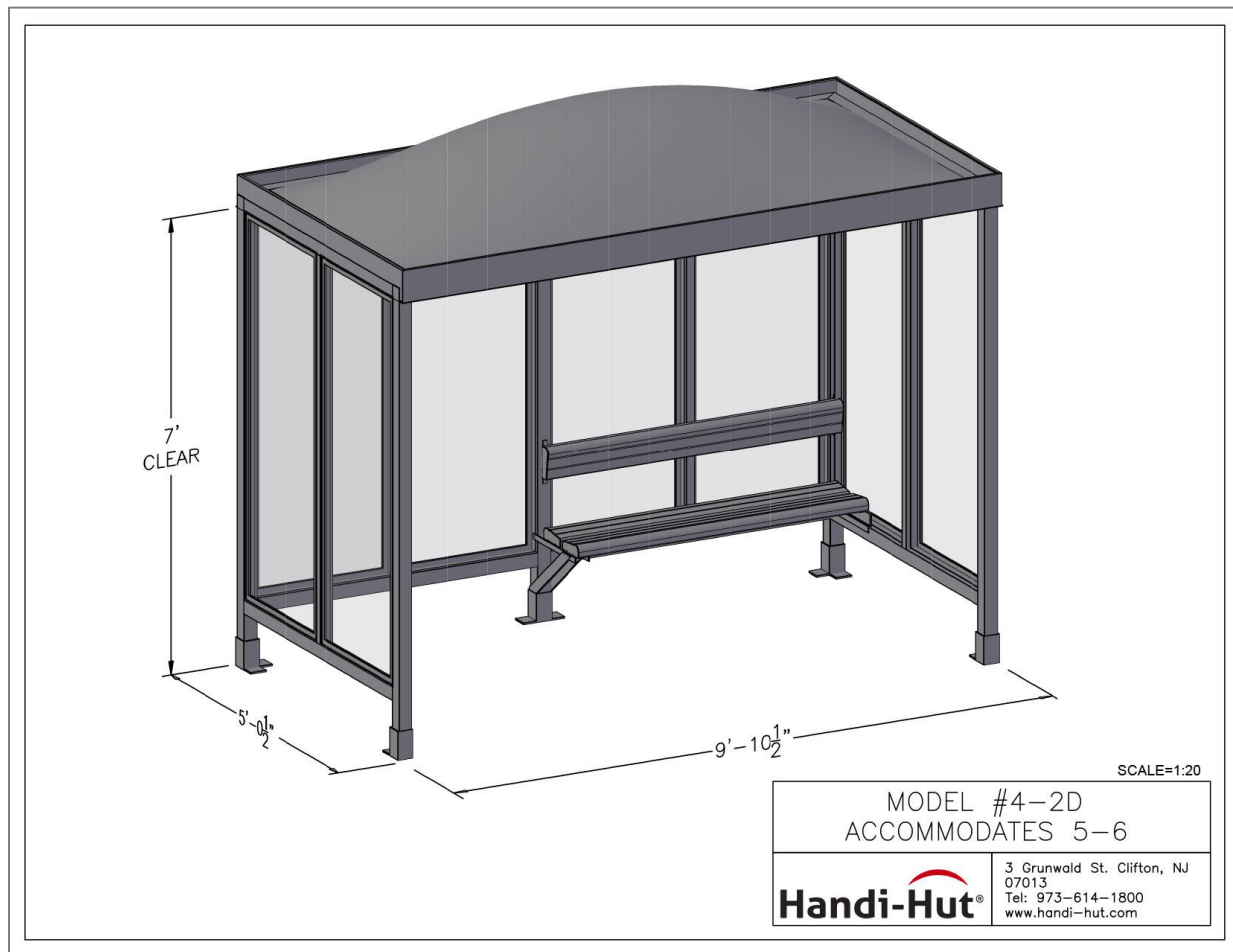


Figure INT 22-0609 – Handi-Hut® Model #4-2D Dome Roof Passenger Shelter

D3. Bicycle parking:

- a. Min 2 stalls as the same facility model specification as INT 22-0608 (Table INT 22-0608) and per the standards of WDO 3.05.06.
- b. Mount the facility min 1 foot from sidewalk edge and min 2 ft from face of curb.

D4. Boarding pad:

- a. Min one boarding pad across the landscape strip to the curb aligned with where the boarding door of a stopped bus would be. Consult the Transit Manager as to where this point should be.
- b. Pavement min width 3.5 ft and to the same public works standards as for sidewalk.

D5. Pole sign: Where a bus stop pole sign does not exist, the developer shall install or pay fee in lieu of one. Consult the Transit Manager for sign specifications.

Notes

1. The public works construction code may supersede memo specifications for City bus stop improvements with higher standards.
2. Note: Any of the Community Services Director or Transit Manager may require that either a [Cherriots](#) bus stop or a City bus stop used also by Cherriots service be to Salem Area Mass Transit District specifications instead.
3. Consult the Transit Manager for all remaining specifications that this memo does not specify: (503) 982-5245 or kathleen.mcclaskey@ci.woodburn.or.us.

The Director or Transit Manager can modify an improvement specification upon request by a developer.

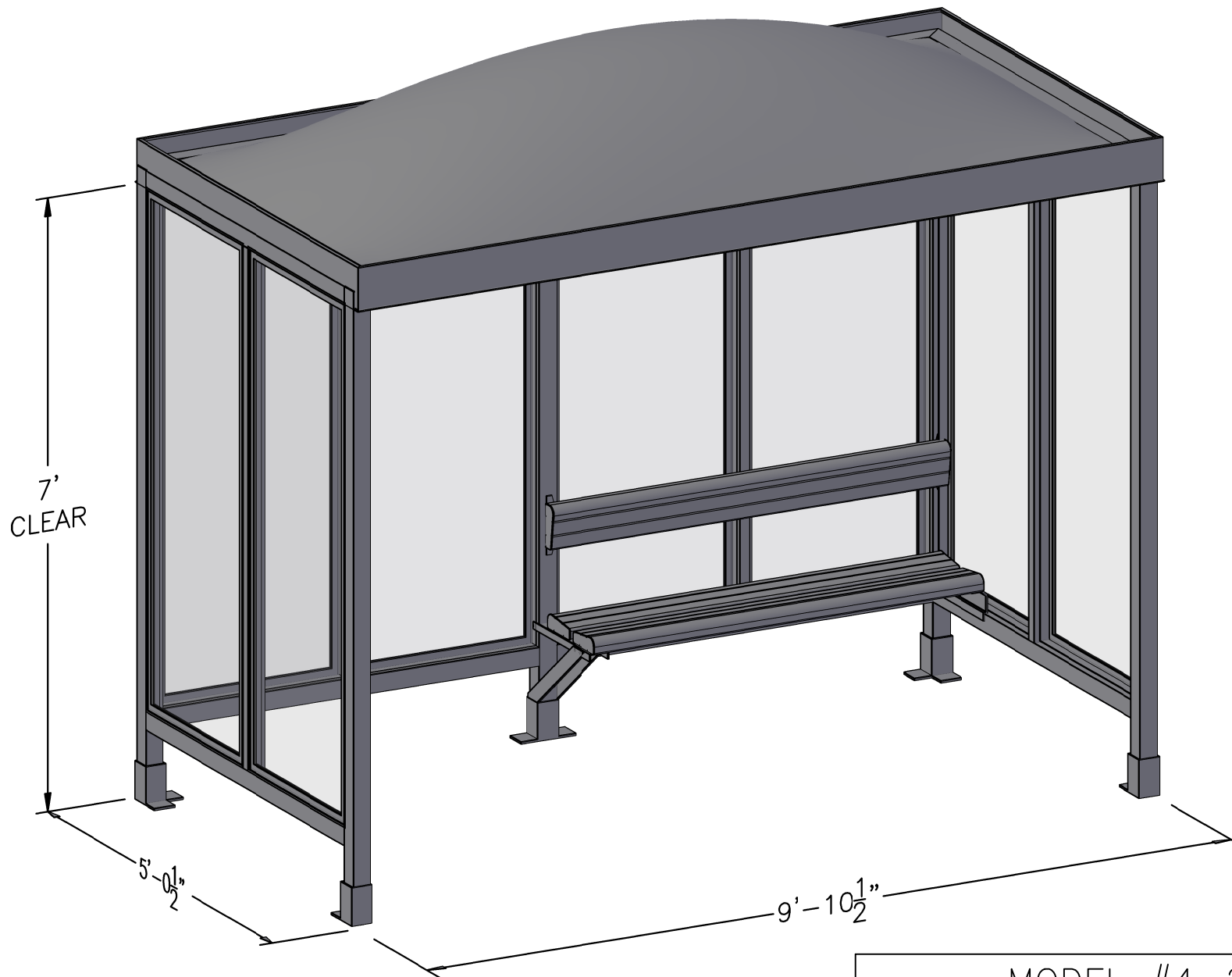
Affirmed,



Chris Kerr, AICP
Community Development Director

Attachment(s):

Handi-Hut® Model #4-2D Dome Roof Passenger Shelter cut/spec sheets (2)

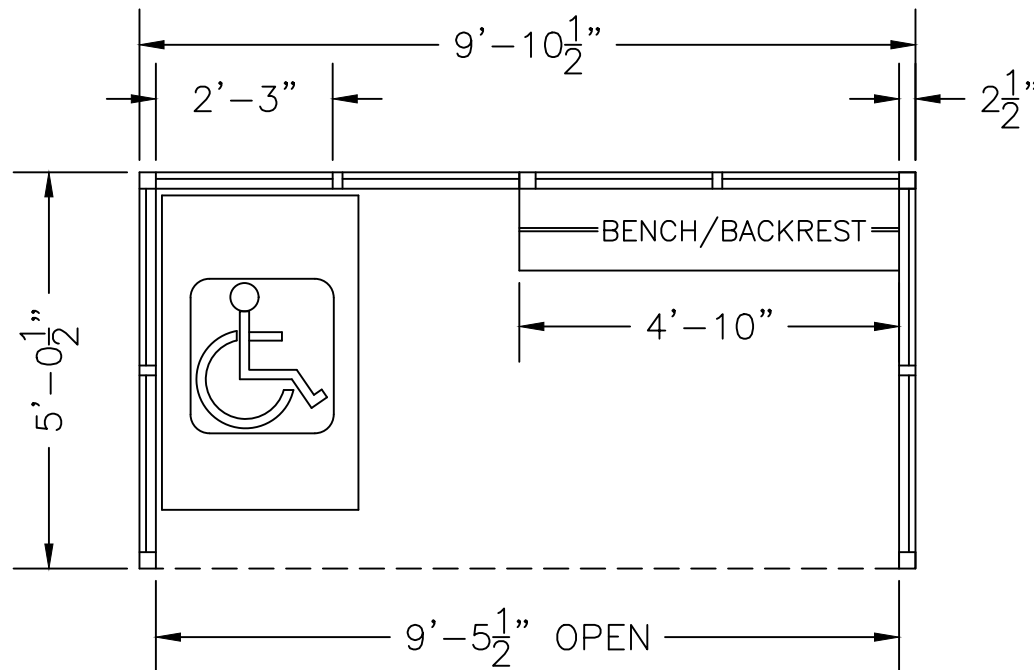
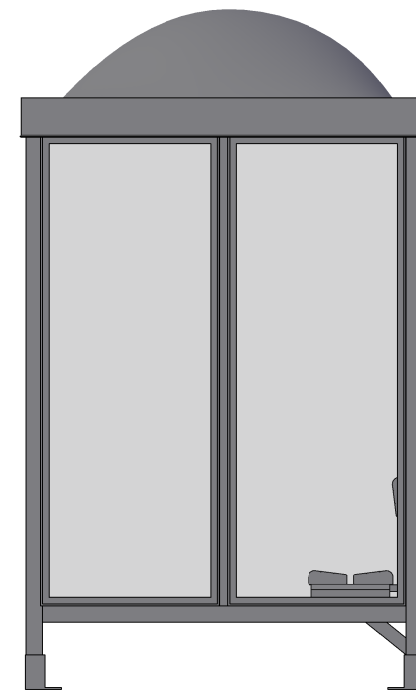
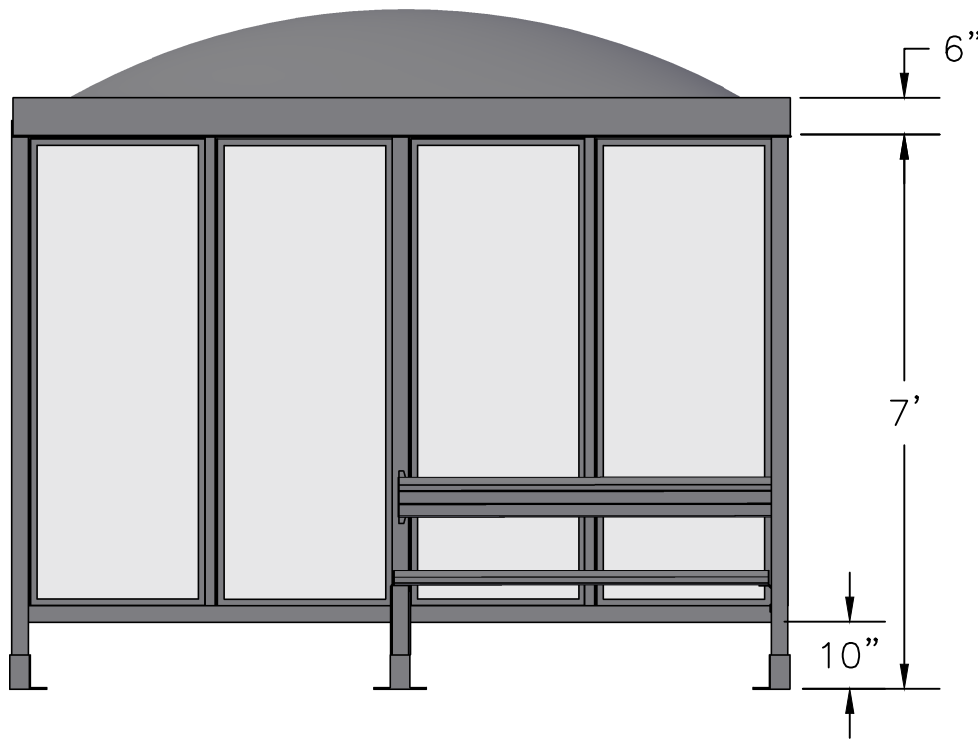


SCALE=1:20

MODEL #4-2D
ACCOMMODATES 5-6

Handi-Hut®

3 Grunwald St. Clifton, NJ
07013
Tel: 973-614-1800
www.handi-hut.com



RECOMMENDED PAD SIZE-12'-0" X 7'-0" X 6" THICK MINIMUM

SCALE=1:30

MODEL #4-2D ACCOMMODATES 5-6

9'-10 1/2" X 5'-0 1/2" DOME ROOF
PASSENGER/SMOKING SHELTER
FRONT LEFT OPENING

ALUMINIUM: 6063-T52
AVAILABLE FINISHES: DARK BRONZE ANODIZED
CLEAR ANODIZED
CUSTOM COLOR POWDER-COAT
GLAZING: 1/4" CLEAR TEMPERED GLASS
ROOF PANELS: 1/4" WHITE TRANSLUCENT ACRYLIC
BENCH/BACKREST: EXTRUDED ALUMINIUM

Handi-Hut®

3 Grunwald St. Clifton, NJ
07013
Tel: 973-614-1800
www.handi-hut.com