

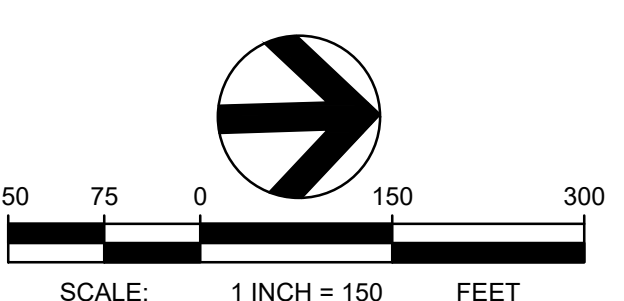
PROJECT BASIE
DESIGN REVIEW
RESUBMITTAL

Trammell Crow Company

PROJECT ADDRESS:
BUTTEVILLE ROAD
WOODBURN, OR

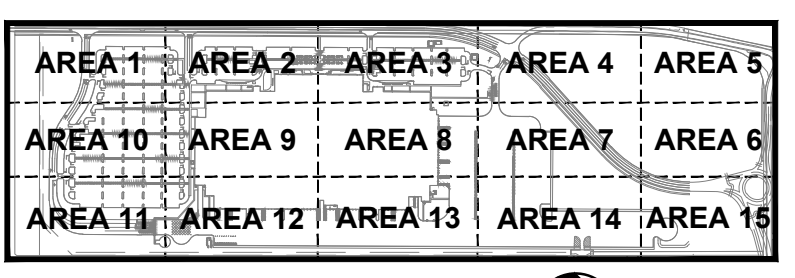
REV	DATE	DESCRIPTION

- NOTES**
- REFER TO SHEET C-010 FOR GENERAL NOTES.
 - REFER TO SHEETS C-211 - C-225 FOR DETAILED SITE PLANS.
 - REFER TO SHEETS C-431 - C-437 FOR BUTTEVILLE ROAD PLANS.
 - REFER TO ARCHITECTURAL PLANS FOR EMPLOYEE DROP OFF SHELTER.
 - REFER TO ARCHITECTURAL PLANS FOR SMOKER'S SHELTER.
 - REFER TO ARCHITECTURAL PLANS FOR CONCRETE RAMP AND STAIRS.
 - REFER TO ARCHITECTURAL PLANS FOR GUARDHOUSE.
 - REFER TO ARCHITECTURAL PLANS FOR COMPACTOR.
 - REFER TO ARCHITECTURAL PLANS FOR MONUMENT SIGN.
 - REFER TO ARCHITECTURAL AND FIRE PROTECTION PLANS FOR WATER STORAGE TANK AND FIRE PUMP HOUSE.
 - REFER TO ARCHITECTURAL AND STRUCTURAL DOCUMENTS FOR ADDITIONAL INFORMATION REGARDING CONSTRUCTION OF STRUCTURES, SHELTERS, ENCLOSURES, LOADING DOCKS, EXTERIOR DOOR LOCATIONS, STAIRS, AND RAMPS.
 - REFER TO SHEETS C-820 - C-821 FOR ADDITIONAL INFORMATION REGARDING SITE LIGHTING.
 - REFER TO SHEET C-842 FOR ADDITIONAL INFORMATION REGARDING ELECTRIC VEHICLE CHARGING STATIONS.



TBM INFORMATION
REFER TO TOPOGRAPHIC SURVEY FOR MORE INFORMATION, SHEETS C-030 - C-031.

BUILDING / PARKING INFORMATION
BUILDING FOOTPRINT = 823,173± SF
62 LOADING DOCKS
428 TRAILER PARKING STALLS
483 TOTAL TRAILER LOCATIONS
1,800 TOTAL CAR PARKING STALLS
(INCLUDING 16 MOTORCYCLE PARKING AND 177 COMPACT CAR PARKING STALLS)



THE EXISTING INFORMATION SHOWN ON THESE PLANS IS PER THE SURVEY COMPLETED BY:
KC DEVELOPMENT
P. O. BOX 388
CAMAS, WA 98607
(360) 834-2519
DATED: 06/27/2016.
THE CONTRACTOR SHALL VERIFY EXISTING SITE CONDITIONS AND CONTACT THE ENGINEER IF DISCREPANCIES ARE NOTED.

UTILITY STATEMENT
LOCATION OF EXISTING UNDERGROUND UTILITIES HAVE BEEN TAKEN FROM DRAWINGS AND FIELD LOCATES SUPPLIED BY THE APPROPRIATE UTILITY COMPANIES. UTILITY LOCATIONS SHOWN ON THIS DRAWING ARE APPROXIMATE ONLY. PRIOR TO BEGINNING ANY CONSTRUCTION, THE CONTRACTOR SHALL VERIFY THE EXACT LOCATION OF EACH UTILITY.

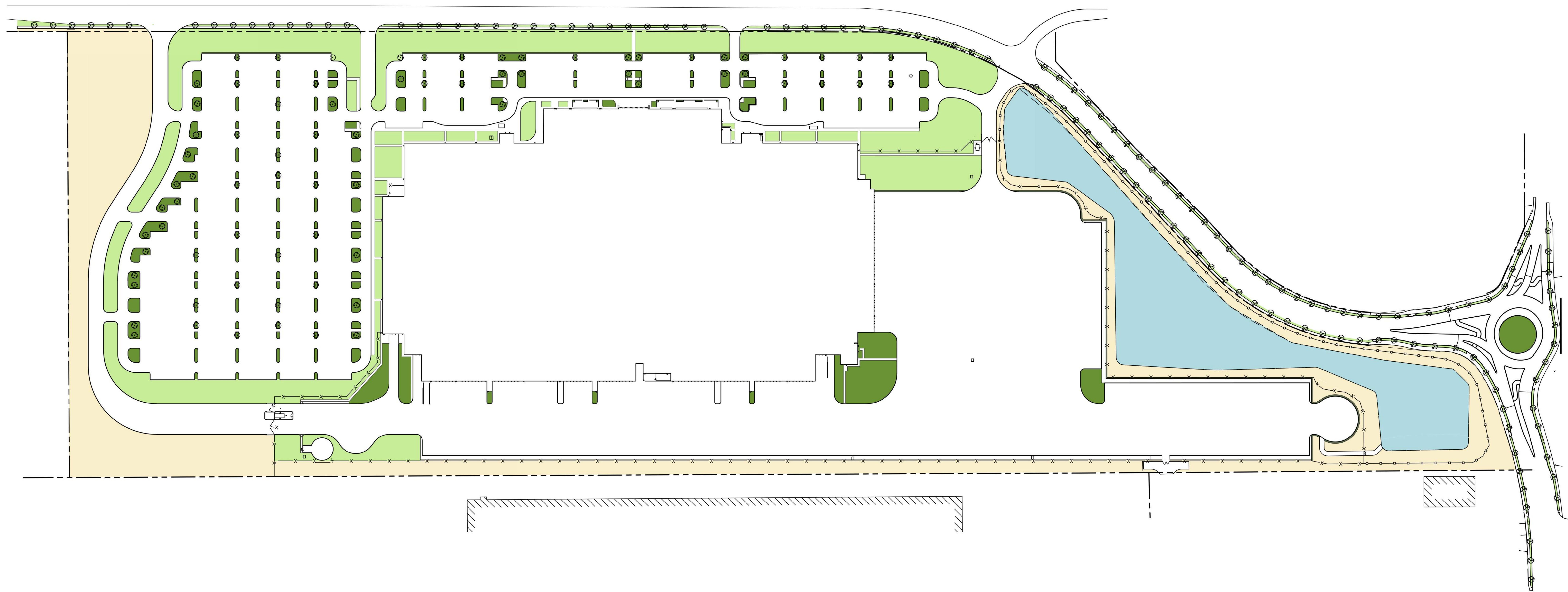


BENCH MARK NOTE

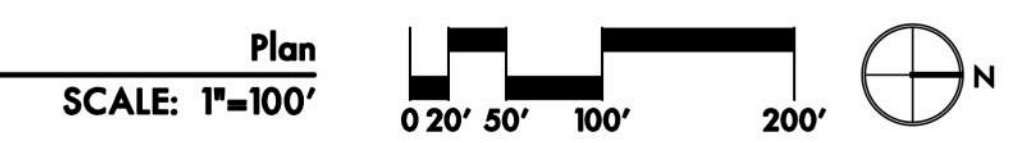
CONTRACTOR SHALL PROTECT ALL EXISTING PROPERTY CORNERS AND BENCH MARKS. ANY DAMAGE CAUSED BY CONSTRUCTION ACTIVITIES SHALL BE REMEDIATED AT THE CONTRACTOR'S EXPENSE.

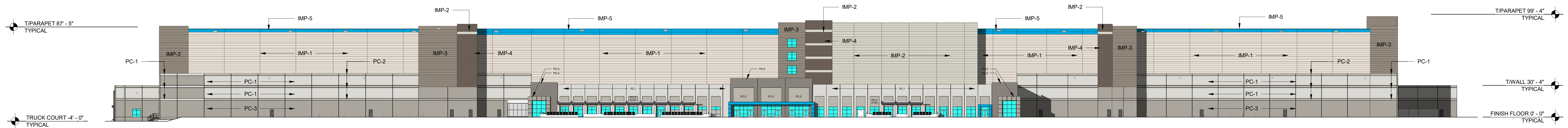
OVERALL SITE PLAN

SHEET NO:
C-200

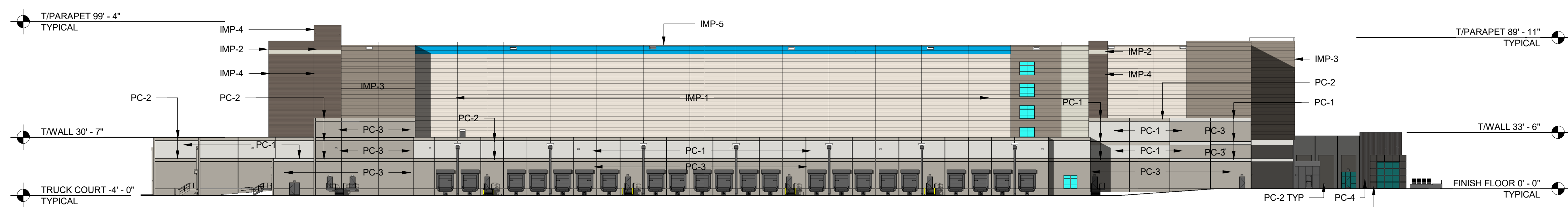


1 ILLUSTRATIVE PLAN

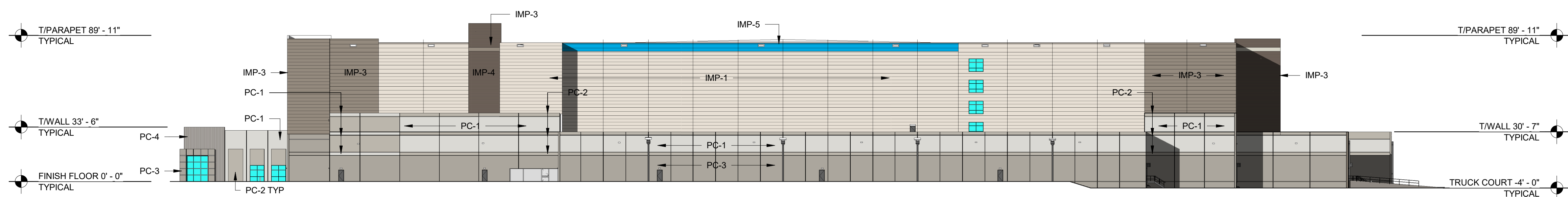




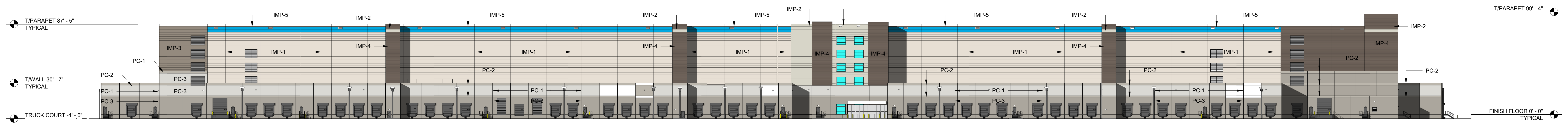
West Elevation | 1:40



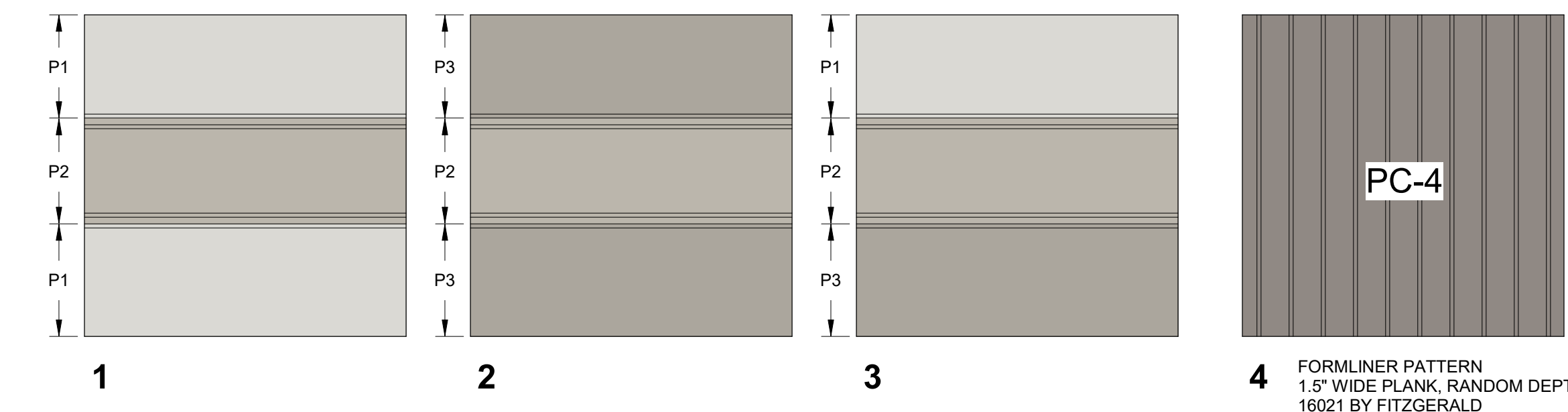
North Elevation | 1:40



South Elevation | 1:40



East Elevation | 1:40



BUILDING FINISH KEY	
	IMP-1 INSULATED METAL PANEL FLUROPON - 'BONE WHITE'
	IMP-2 INSULATED METAL PANEL FLUROPON - 'DRIFT WOOD'
	IMP-3 INSULATED METAL PANEL FLUROPON - 'DOVE GRAY'
	IMP-4 INSULATED METAL PANEL FLUROPON - 'ZINC GRAY'
	IMP-5 INSULATED METAL PANEL FLUROPON MATCH 'PANTONE 2995C'
	PC-1 PRECAST CONC. PANEL, SW 7646 (FIRST STAR)
	PC-2 PRECAST CONC. PANEL, SW 7016 (MINDFUL GRAY)
	PC-3 PRECAST CONC. PANEL, SW 7017 (DORIAN GRAY)
	PC-4 PRECAST CONC. PANEL, SW 7018 (DOVE TAIL)
	PC-5 PRECAST CONC. PANEL, SW 9174 (MOTH WING)

BUILDING ELEMENTS	COLOR
METAL COPING	PAC-CLAD 'SLATE GRAY'
METAL DOWNSPOUT AND CONDUCTOR HEADS	PAC-CLAD 'SLATE GRAY'
THRU - WALL SCUPPERS	PAC-CLAD 'SLATE GRAY'
HOLLOW METAL DOORS AND FRAMES	COLOR TO MATCH 'PCZ'
EXTERIOR METAL RAILINGS, STAIRS AND LANDINGS	GALVANIZED - NO PAINT
SMOKER'S CANOPY	BONE WHITE
ENTRY AND RECRUITING COMPOSITE METAL CANOPY	PANTONE 2995C
STOREFRONT & CURTAIN WALL	DARK BRONZE
EXTERIOR METAL LOUVERS	PAC-CLAD 'SLATE GRAY'

BUILDING FLOOR AREAS	
GROUND LEVEL	630,579 SF
MEZZANINE	315,374 SF
LEVEL 2	490,581 SF
LEVEL 3	490,581 SF
LEVEL 4	490,581 SF
LEVEL 5	490,581 SF