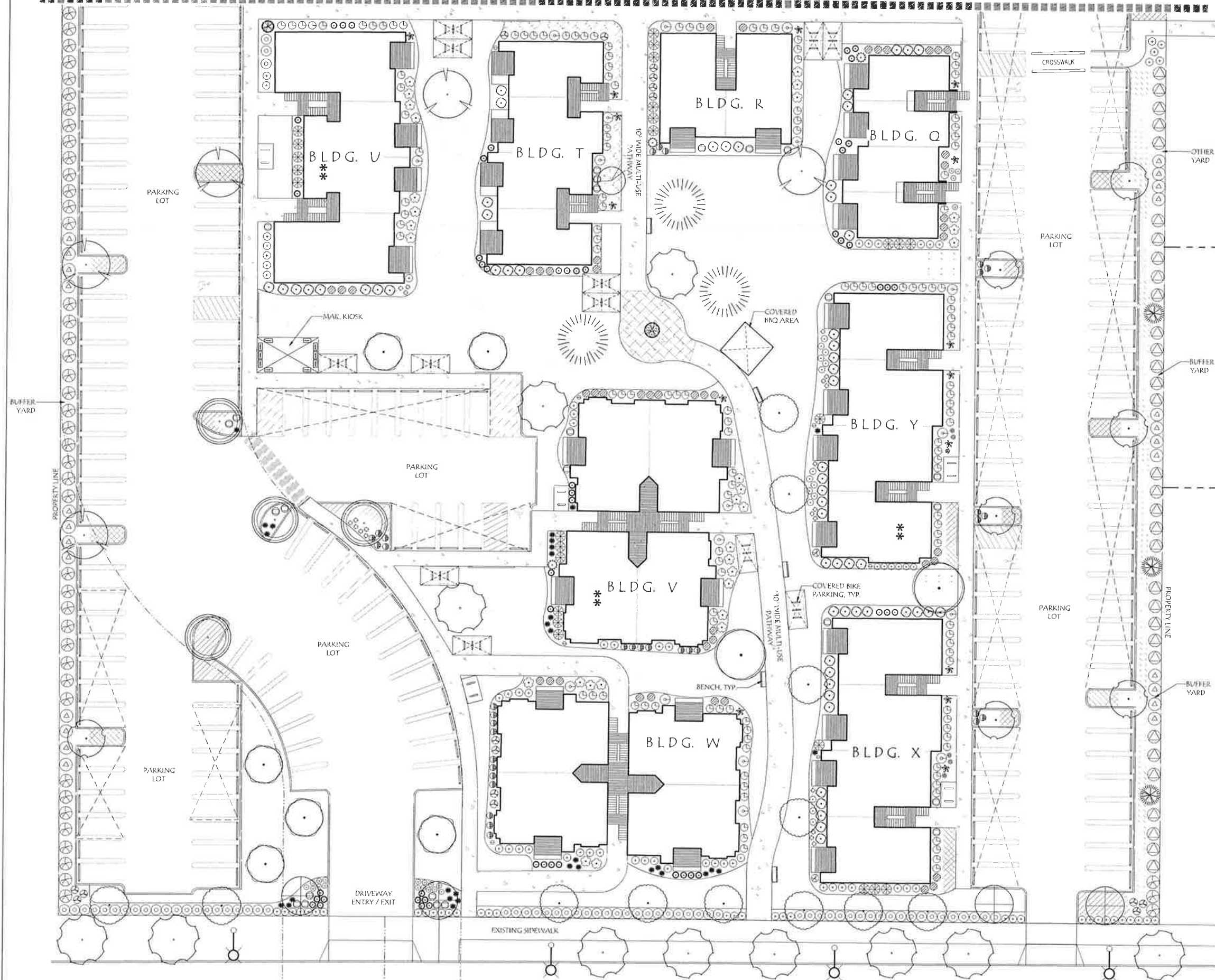


MATCHLINE 'A' SEE SHEET L1.2



MOLALLA ROAD
(WOODBURN ESTACADA HWY NE)

General Notes:

- PLANS ARE PRELIMINARY, NOT FOR BIDDING OR CONSTRUCTION.
- SEE CIVIL DRAWINGS FOR SITE PLAN.
- STREET TREES SELECTED FROM WOODBURN APPROVED STREET TREE LIST FOR LARGE TREES.
- PLANTING REQUIREMENTS SEE THIS SHEET AND L1.2.
- PLANT LEGEND SEE SHEET L1.3.
- IRRIGATION TO BE AN AUTOMATIC UNDERGROUND IRRIGATION SYSTEM.

Site Information

TOTAL SITE AREA (SF) = 417,470 SF (9.6 ACRES)
TOTAL LANDSCAPE AREA = 116,641 SF

**Landscape Planting Requirements:
Street Setback**

REQUIRED PLANTS:	1 PLANT UNIT (PU) / 15 SF
SIGNIFICANT TREE =	15 PU
LARGE TREE =	10 PU
MEDIUM TREE =	8 PU
SMALL TREE =	4 PU
LARGE SHRUB =	2 PU
SMALL/MEDIUM SHRUB =	1 PU
LAWN/GROUND COVER =	1 PU / 50 SF

LANDSCAPE SQUARE FOOTAGE = 4740 SF
NUMBER OF PLANT UNITS = 316 PU

Plants	# of Plants	Plant Units
Medium Tree	4	32
Small Tree	8	32
Large Shrub	67	134
Small / Medium Shrub	68	68
Lawn / Groundcover	2543 sf	51
Total Plant Units		317

**Landscape Planting Requirements:
Off-Street Parking/Loading**

REQUIRED PLANTS:	1 PLANT UNIT (PU) / 30 SF AND REQUIRED TREE PER PARKING SPACES BELOW
1 SMALL TREE PER	10 PARKING SPACES
1 MEDIUM TREE PER	15 PARKING SPACES
1 LARGE TREE PER	25 PARKING SPACES

LANDSCAPE SQUARE FOOTAGE = 54,282 SF (21% PARKING AREA)
NUMBER OF PLANT UNITS = 1,714 PU (EXCLUDING REQUIRED TREES)
NUMBER OF PARKING SPACES = 517 SPACES = 54 MEDIUM TREES

Plants	# of Plants	Plant Units
Large Tree	9	90
Medium Tree	28	224
Small Tree	8	32
Large Shrub	249	498
Small / Medium Shrub	714	714
Lawn / Groundcover	9,817 sf	197
Total Plant Units		1755

Laurus Designs, LLC



1012 Pine Street
Silverton, Oregon
503.784.6494

Woodburn Place West

Molalla Road /
Woodburn Estacada Hwy. NE
Woodburn, Oregon



PRELIMINARY
PLANTING
PLAN



SCALE: 1"=20'-0"
0' 10' 20' 40'
SCALE

April 25th, 2022

REVISIONS

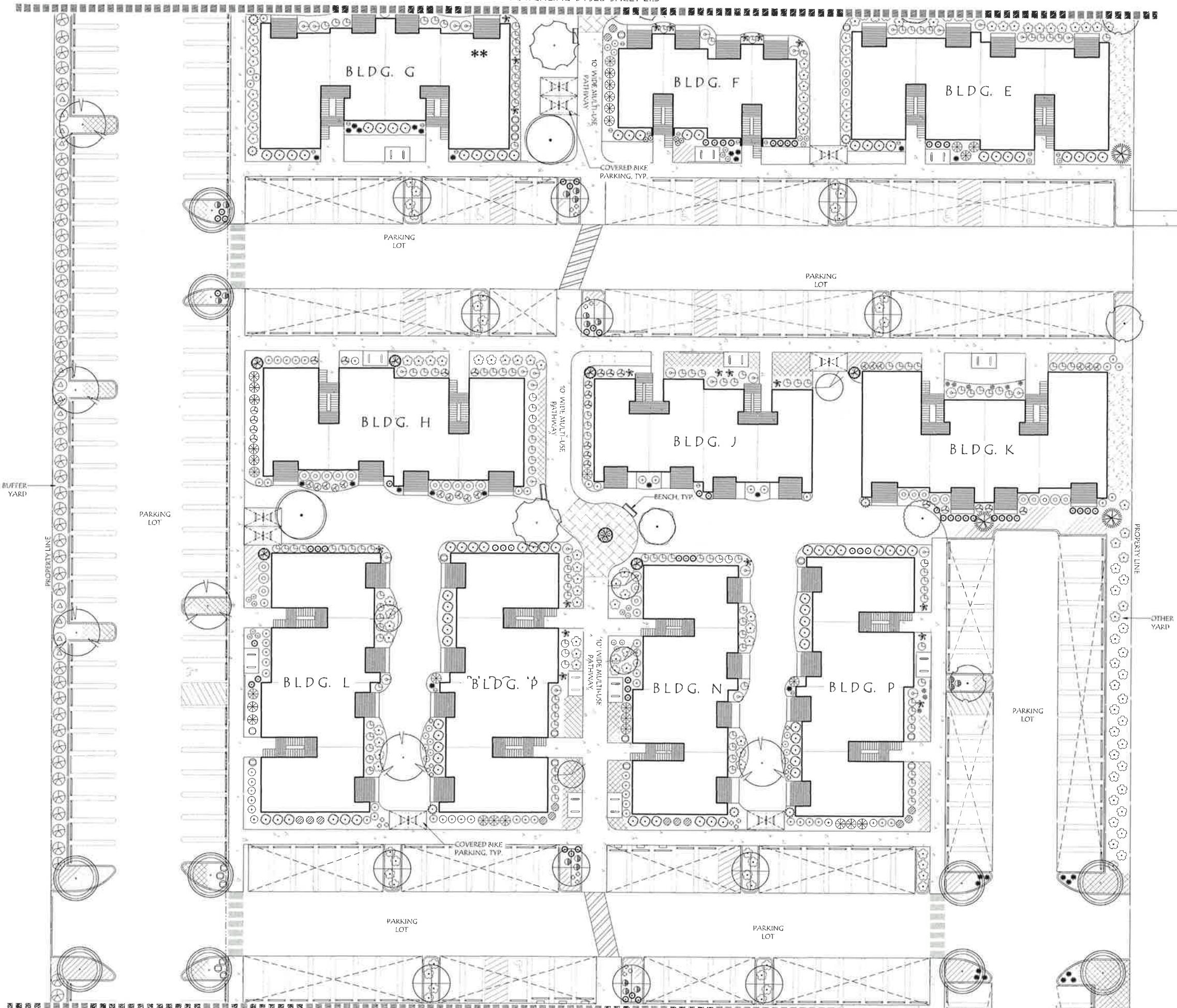
#	DATE	NOTES	INITIALS

L1.1

SHEET 1 OF 3

PROJECT # 18408

MATCHLINE 'B': SEE SHEET L1.3



MATCHLINE 'A': SEE SHEET L1.1

General Notes:

1. PLANS ARE PRELIMINARY, NOT FOR BIDDING OR CONSTRUCTION.
2. SEE CIVIL DRAWINGS FOR SITE PLAN.
3. STREET TREES SELECTED FROM WOODBURN APPROVED STREET TREE LIST FOR LARGE TREES.
4. PLANTING REQUIREMENTS SEE THIS SHEET AND L1.1.
5. PLANT LEGEND SEE SHEET L1.3.
6. IRRIGATION TO BE AN AUTOMATIC UNDERGROUND IRRIGATION SYSTEM.

Landscape Planting Requirements: Buffer

REQUIRED PLANTS: 1 PLANT UNIT (PU) / 20 SF

SIGNIFICANT TREE = 15 PU
 LARGE TREE = 10 PU
 MEDIUM TREE = 8 PU
 SMALL TREE = 4 PU
 LARGE SHRUB = 2 PU
 SMALL/MEDIUM SHRUB = 1 PU
 LAWN/GROUND COVER = 1 PU / 50 SF

LANDSCAPE SQUARE FOOTAGE = 11,149 SF
 NUMBER OF PLANT UNITS = 557 PU

Plants	# of Plants	Plant Units
Medium Tree	3	24
Small Tree	3	12
Large Shrub	257	474
Small / Medium Shrub	6	6
Lawn / Groundcover	2200 sf	44
Total Plant Units		560

Landscape Planting Requirements: Other Yards

REQUIRED PLANTS: 1 PLANT UNIT (PU) / 50 SF

SIGNIFICANT TREE = 15 PU
 LARGE TREE = 10 PU
 MEDIUM TREE = 8 PU
 SMALL TREE = 4 PU
 LARGE SHRUB = 2 PU
 SMALL/MEDIUM SHRUB = 1 PU
 LAWN/GROUND COVER = 1 PU / 50 SF

LANDSCAPE SQUARE FOOTAGE = 5,406 SF
 NUMBER OF PLANT UNITS = 108 PU

Plants	# of Plants	Plant Units
Medium Tree	2	16
Small Tree	2	8
Large Shrub	11	22
Small / Medium Shrub	69	69
Lawn / Groundcover	982 sf	20
Total Plant Units		155

Laurus Designs, LLC



1012 Pine Street
 Silverton, Oregon
 503.784.6494

Woodburn Place West

Molalla Road /
 Woodburn Estacada Hwy. NE
 Woodburn, Oregon



PRELIMINARY PLANTING PLAN



SCALE: 1"=20'-0"



April 25th, 2022

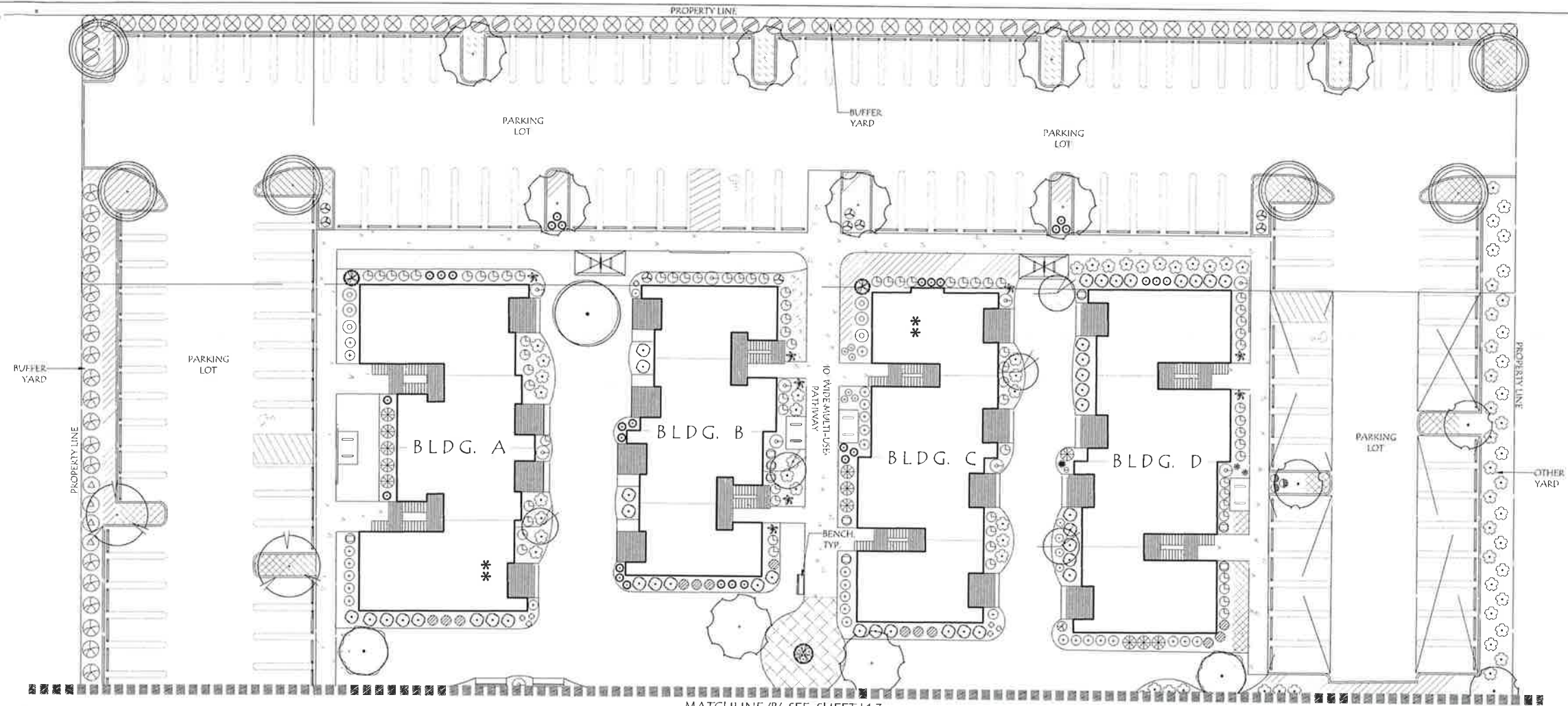
REVISIONS

#	DATE	NOTES	INITIALS

L1.2

SHEET 2 OF 3

PROJECT # 1420



General Notes:

1. PLANS ARE PRELIMINARY, NOT FOR BIDDING OR CONSTRUCTION.
2. SEE CIVIL DRAWINGS FOR SITE PLAN.
3. STREET TREES SELECTED FROM WOODBURN APPROVED STREET TREE LIST FOR LARGE TREES.
4. PLANTING REQUIREMENTS SEE SHEETS L1.1 AND L1.2.
5. PLANT LEGEND SEE THIS SHEET.
6. IRRIGATION TO BE AN AUTOMATIC UNDERGROUND IRRIGATION SYSTEM.

Laurus Designs, LLC



1012 Pine Street
Silverton, Oregon
503.784.6494

Woodburn Place West

Molalla Road /
Woodburn Estacada Hwy. NE
Woodburn, Oregon



PRELIMINARY
PLANTING
PLAN



SCALE: 1"=20'-0"
0' 10' 20' 40'
SCALE

April 25th, 2022

REVISIONS

#	DATE	NOTES	INITIALS

L1.3

SHEET 3 OF 3

PROJECT # 14434

Preliminary Plant Legend

TREES	QTY	BOTANICAL / COMMON NAME	SIZE	MATURE SIZE
	11	Acer circinatum / Vine Maple	10" HL Min.	Small
	3	Acer palmatum 'Orangeola' / Orangeola Japanese Maple	Min. 36" HL	Small
	16	Acer rubrum 'Bowhall' / Bowhall Red Maple	2" Cal., B&B	Medium
	5	Acer rubrum 'October Glory' / October Glory Red Maple	2" Cal., B&B	Medium
	20	Carpinus betulus 'Fastigiata' / Pyramidal European Hornbeam	2" Cal., B&B	Medium
	6	Chamaecyparis nootkatensis 'Pendula' / Weeping Nootka Cypress	4-6" HL, B&B	Small
	9	Chamaecyparis obtusa 'Compacta' / Compact Hinoki False Cypress	4-6" HL, B&B	Small
	15	Fraxinus oxycarpa 'Raywood' TM / Raywood Ash	2" Cal., B&B	Medium
	10	Juniperus scopulorum 'Blue Arrow' / Blue Arrow Juniper	4-6" HL, B&B	Small
	9	Liriodendron tulipifera 'Arnold' / Arnold Tulip Poplar	2" Cal., B&B	Large
	20	Nyssa sylvatica 'Wildfire' / Wildfire Tupelo	2" Cal., B&B	Large
	15	Panotia persica 'Vanessa' / Vanessa Persian Parrotia	2" Cal., B&B	Small
	3	Pinus ponderosa willamettensis / Willamette Valley Ponderosa Pine	6-8" HL, B&B	Large
	12	Zelkova serata 'Fastigiata' / Columbar Zelkova	2" Cal., B&B	Medium

SHRUBS	QTY	BOTANICAL / COMMON NAME	SIZE
	57	Abelia x grandiflora 'Kaleidoscope' / Kaleidoscope Glossy Abelia	1 Gal.
	188	Abelia x grandiflora 'Sherwoodii' / Sherwood Glossy Abelia	2 Gal.
	75	Azalea x 'Mother's Day' / Mother's Day Azalea	2 Gal.
	39	Berberis thunbergii 'Crimson Pygmy' / Crimson Pygmy Japanese Barberry	2 Gal.
	46	Ceanothus x 'Victoria' / Victoria Wilk Lilac	3 Gal.
	15	Cistus corbariensis / White Rockrose	2 Gal.
	19	Cornus stricta 'Kelsey' / Kelsey's Dwarf Red Twig Dogwood	2 Gal.
	32	Cotoneaster parneyi / Cotoneaster	3 Gal.
	110	Euonymus alatus 'Compactus' / Compact Burning Bush	3 Gal.
	56	Hydrangea macrophylla 'Blue Wave' / Blue Wave Lacecap Hydrangea	3 Gal.
	24	Ilex crenata 'Sky Pencil' / Sky Pencil Japanese Holly	24"-50" Ht.
	177	Lonicera pileata / Privet Honeysuckle	2 Gal.
	67	Malonia aquifolium / Oregon Grape	2 Gal.
	143	Nandina domestica 'Gulf Stream' TM / Gulf Stream Heavenly Bamboo	1 Gal.
	40	Osmanthus delavayi / Delavayi Osmanthus	3 Gal.
	20	Osmanthus x burkwoodii / Burkwood Osmanthus	3 Gal.
	227	Prunus laurocerasus 'Mount Vernon' / Mount Vernon English Laurel	1 Gal.
	98	Prunus laurocerasus 'Otto Luyken' / Otto Luyken English Laurel	2 Gal.

	555	Sarcococca confusa / Sweetbox	2 Gal.
	47	Spiraea japonica 'Goldmound' / Goldmound Japanese Spirea	2 Gal.
	55	Spiraea japonica 'Lime Mound' / Lime Mound Japanese Spirea	2 Gal.

GRASSES / PERENNIALS	QTY	BOTANICAL / COMMON NAME	SIZE
	54	Calamagrostis x acutiflora 'Karl Foerster' / Karl Foerster Feather Reed Grass	1 Gal.
	8	Crocsmia x 'Severn Sunrise' / Severn Sunrise Crocsmia	1 Gal.
	52	Heimericallis x 'Stella de Oro' / Stella de Oro Daylily	1 Gal.
	17	Hosta spp. / Hosta	1 Gal.
	65	Pennisetum alopecuroides 'Hammel' / Hammel Fountain Grass	1 Gal.
	43	Polystichum munium / Western Sword Fern	1 Gal.

GROUND COVERS	QTY	BOTANICAL / COMMON NAME	SIZE
	675	Arctostaphylos uva-ursi 'Massachusetts' / Massachusetts Kinnikinnick	1 Gal.
	517	Fragaria chiloensis / Beach Strawberry	1 Gal.
	685	Pachysandra terminalis / Japanese Pachysandra	1 Gal.
	549	Rubus calycanoides 'Emerald Carpet' / Emerald Carpet Creeping Bramble	1 Gal.
	54,389 sf	ProTime 301 Water Smarter Fescue or Approved Equal	Seed

MATCHLINE 'B': SEE SHEET L1.3