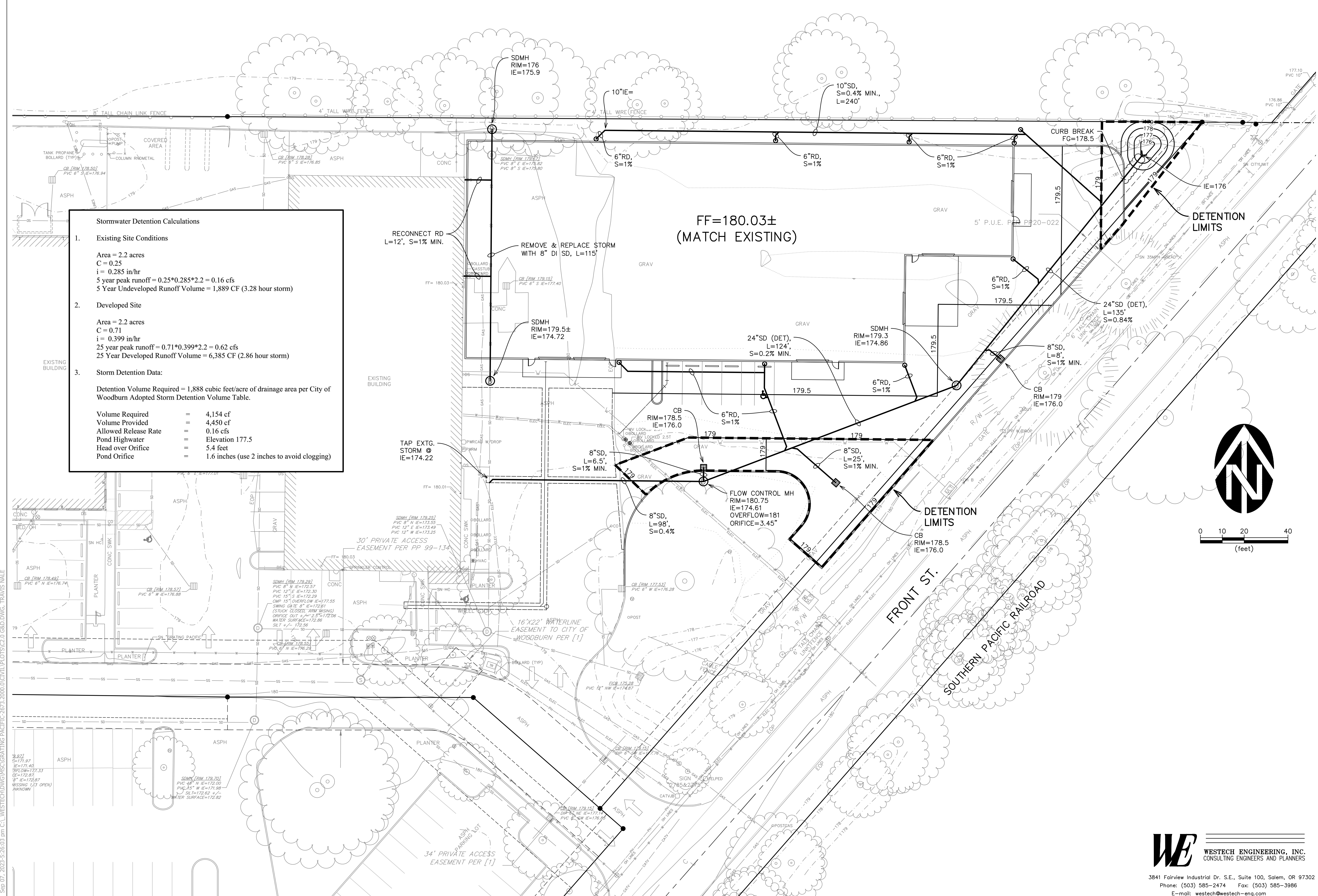


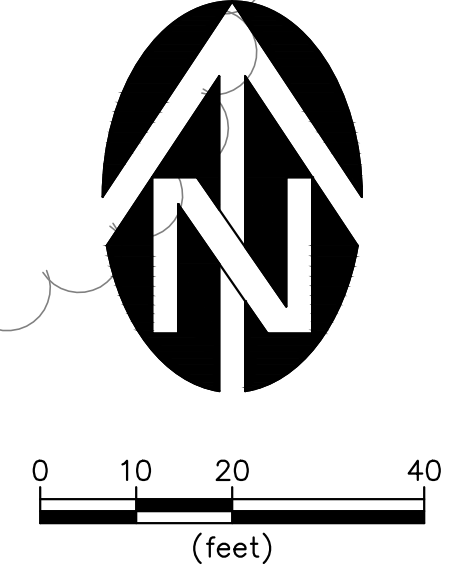
Sep 07, 2023 5:26:03 pm C:\WESTECH\DWG\MSC\GRATING PACIFIC\2673.2000.0\CIVIL\PLT\CS2.0.GSD.DWG, TRAVIS NALE



Stormwater Detention Calculations

- Existing Site Conditions**
 Area = 2.2 acres
 C = 0.25
 i = 0.285 in/hr
 5 year peak runoff = 0.25*0.285*2.2 = 0.16 cfs
 5 Year Undeveloped Runoff Volume = 1,889 CF (3.28 hour storm)
- Developed Site**
 Area = 2.2 acres
 C = 0.71
 i = 0.399 in/hr
 25 year peak runoff = 0.71*0.399*2.2 = 0.62 cfs
 25 Year Developed Runoff Volume = 6,385 CF (2.86 hour storm)
- Storm Detention Data:**
 Detention Volume Required = 1,888 cubic feet/acre of drainage area per City of Woodburn Adopted Storm Detention Volume Table.

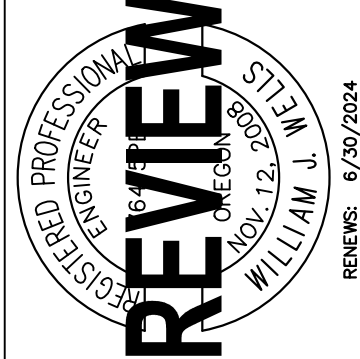
Volume Required	=	4,154 cf
Volume Provided	=	4,450 cf
Allowed Release Rate	=	0.16 cfs
Pond Highwater	=	Elevation 177.5
Head over Orifice	=	5.4 feet
Pond Orifice	=	1.6 inches (use 2 inches to avoid clogging)



JOB NO. 2673.2000.0 CHECKED BY: JW
DRAWN BY: TN DATE: AUG. 2023
REVISION:

CONSULTING STRUCTURAL ENGINEERS
MSC ENGINEERS
SINCE 1925
3470 Pleasant Place NE
Suite 120
Salem, OR 97301
503.585.2474
mscengr@pacific.com

GRADING & DRAINAGE PLAN
GRATING PACIFIC BUILDING C
2775 N. FRONT ST.
WOODBURN, OR 97071
FOR: GRATING PACIFIC

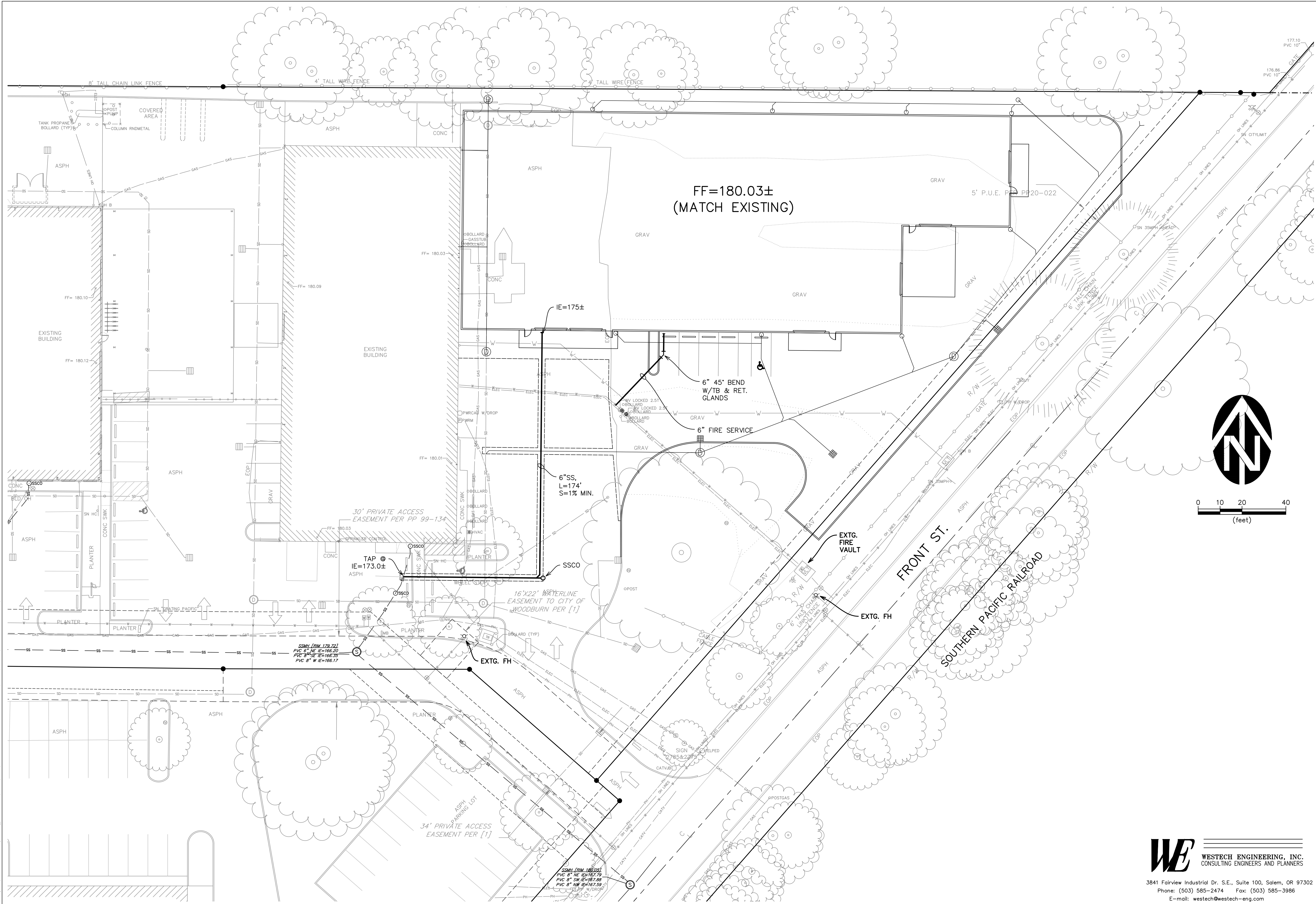


DWG. NO.
C2.0
X of X
230105

WE WESTECH ENGINEERING, INC.
CONSULTING ENGINEERS AND PLANNERS
3841 Fairview Industrial Dr. S.E., Suite 100, Salem, OR 97302
Phone: (503) 585-2474 Fax: (503) 585-3986
E-mail: westech@westech-eng.com

© 2023, MSC ENGINEERS, INC.

Sep 07, 2023 5:26:09 pm C:\WESTECH\DWG\MSC\GRATING PACIFIC\2673.2000.0\CIVIL\PLT\CS3.0 UTILITY.DWG, TRAVIS MALE



JOB NO. 2673.2000.0 CHECKED BY: JW

DATE: AUG. 2023

DRAWN BY: TN

REVISION:

MSC
ENGINEERS
SINCE 1925

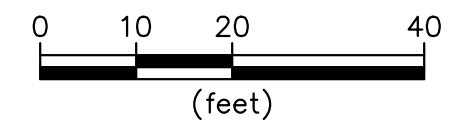
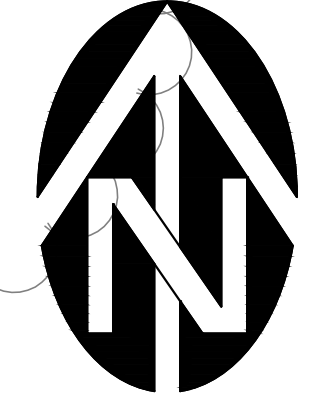
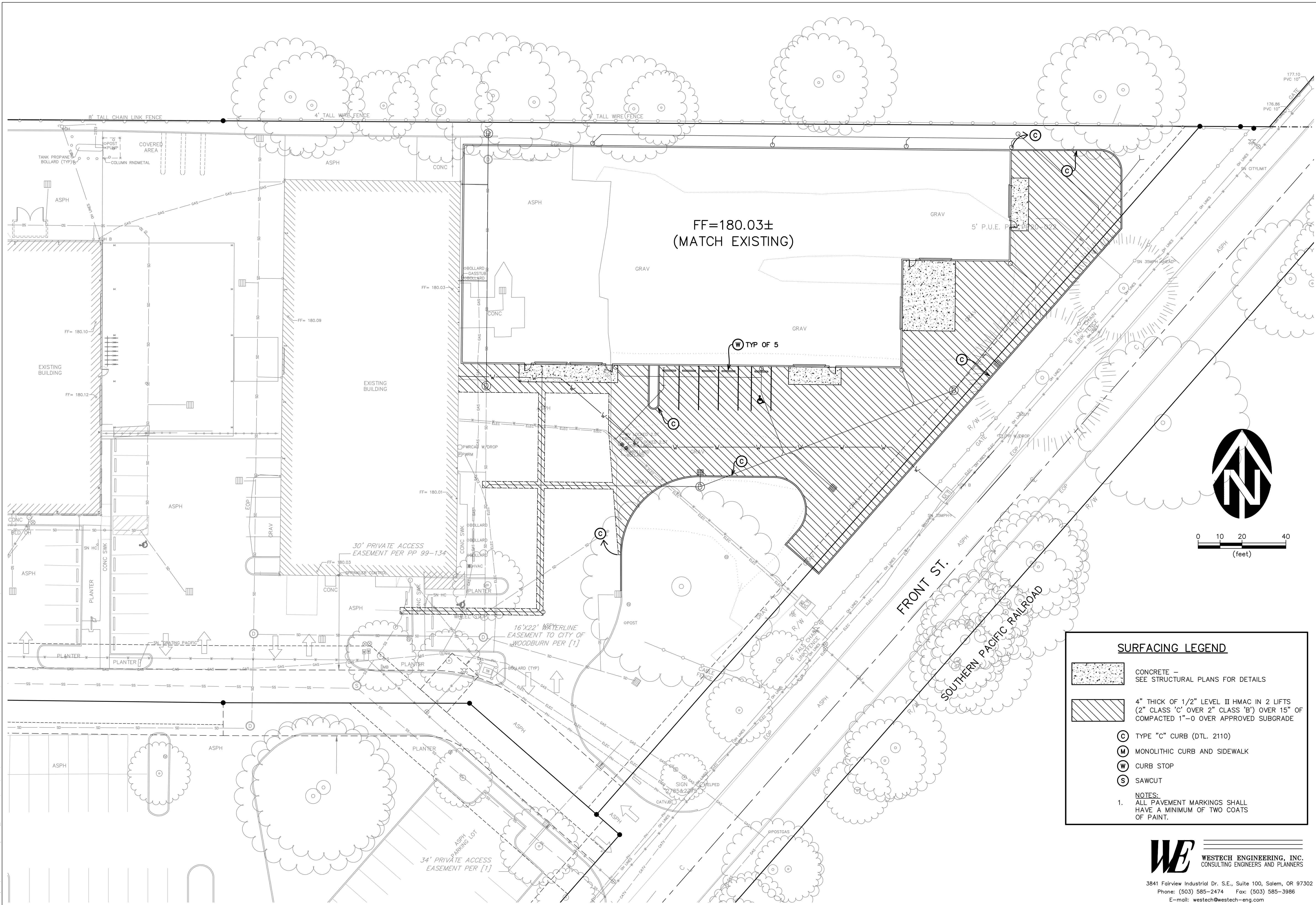
UTILITY PLAN
GRATING PACIFIC BUILDING C
2775 N. FRONT ST.
WOODBURN, OR 97071
FOR: GRATING PACIFIC



DWG. NO.
C3.0
X of X
230105

WE WESTECH ENGINEERING, INC.
CONSULTING ENGINEERS AND PLANNERS
3841 Fairview Industrial Dr. S.E., Suite 100, Salem, OR 97302
Phone: (503) 585-2474 Fax: (503) 585-3986
E-mail: westech@westech-eng.com

Sep 07, 2023 5:26:16 pm C:\WESTECH\DWG\MSC\GRATING PACIFIC-2673.2000\0\CIVIL\PLOTS\C4.0 SURFACING.DWG, TRAVIS MALE



SURFACING LEGEND

- CONCRETE - SEE STRUCTURAL PLANS FOR DETAILS
- 4" THICK OF 1/2" LEVEL II HMAC IN 2 LIFTS (2" CLASS 'C' OVER 2" CLASS 'B') OVER 15" OF COMPACTED 1"-0 OVER APPROVED SUBGRADE
- TYPE "C" CURB (DTL. 2110)
- MONOLITHIC CURB AND SIDEWALK
- CURB STOP
- SAWCUT

NOTES:
1. ALL PAVEMENT MARKINGS SHALL HAVE A MINIMUM OF TWO COATS OF PAINT.

WE WESTECH ENGINEERING, INC.
CONSULTING ENGINEERS AND PLANNERS
3841 Fairview Industrial Dr. S.E., Suite 100, Salem, OR 97302
Phone: (503) 585-2474 Fax: (503) 585-3986
E-mail: westech@westech-eng.com

JOB NO. 2673.2000.0 CHECKED BY: JW
DRAWN BY: TN DATE: AUG. 2023
REVISION:

MSC
CONSULTING STRUCTURAL ENGINEERS
3470 Piebend Place NE
Suite 120
Salem, OR 97301
503.585.2474
westech@westech-eng.com

ENGINEERS
SINCE 1925

SURFACING PLAN
GRATING PACIFIC BUILDING C
2775 N. FRONT ST.
WOODBURN, OR 97071
FOR: GRATING PACIFIC



DWG. NO.
C4.0
X of X
230105