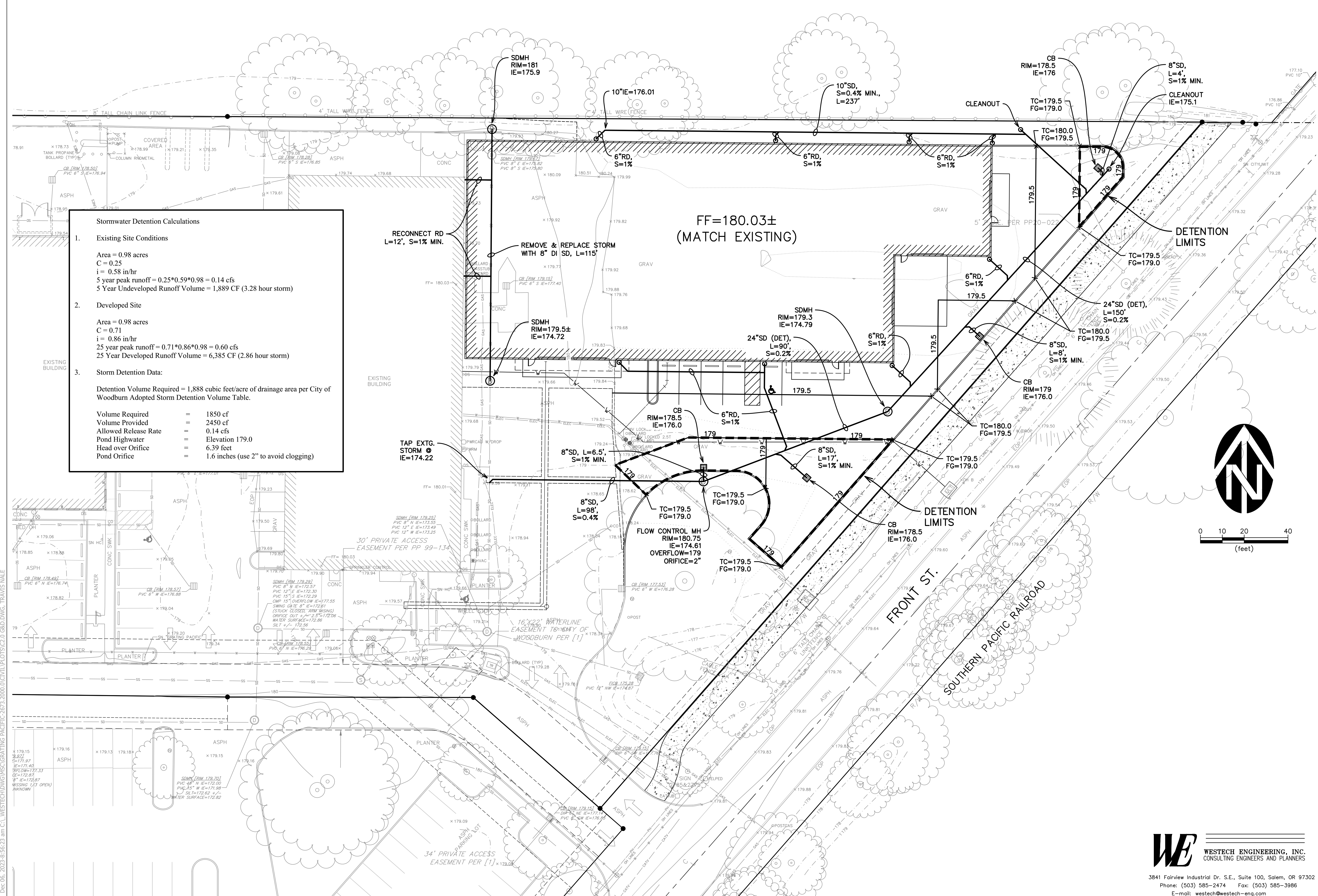


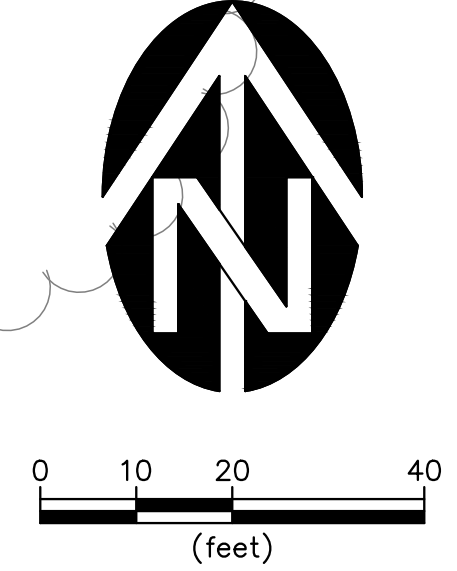
Dec 06, 2023 8:56:23 am C:\WESTTECH\DWG\MSC\GRATING PACIFIC-2673.2000\0\CIVIL\PLT\CS2.0.GSD.DWG, TRAVIS NALE



**Stormwater Detention Calculations**

- Existing Site Conditions**
  - Area = 0.98 acres
  - C = 0.25
  - i = 0.58 in/hr
  - 5 year peak runoff =  $0.25 \times 0.59 \times 0.98 = 0.14$  cfs
  - 5 Year Undeveloped Runoff Volume = 1,889 CF (3.28 hour storm)
- Developed Site**
  - Area = 0.98 acres
  - C = 0.71
  - i = 0.86 in/hr
  - 25 year peak runoff =  $0.71 \times 0.86 \times 0.98 = 0.60$  cfs
  - 25 Year Developed Runoff Volume = 6,385 CF (2.86 hour storm)
- Storm Detention Data:**
  - Detention Volume Required = 1,888 cubic feet/acre of drainage area per City of Woodburn Adopted Storm Detention Volume Table.

Volume Required	=	1850 cf
Volume Provided	=	2450 cf
Allowed Release Rate	=	0.14 cfs
Pond Highwater	=	Elevation 179.0
Head over Orifice	=	6.39 feet
Pond Orifice	=	1.6 inches (use 2" to avoid clogging)



JOB NO. 2673.2000.0 CHECKED BY: JW

CONSULTING STRUCTURAL ENGINEERS

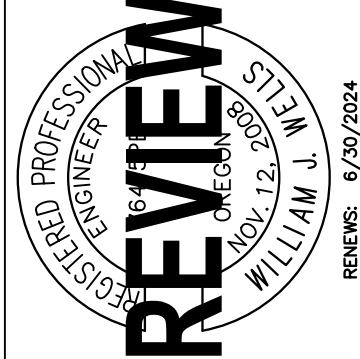
DATE: AUG. 2023

REVISION: DRAWN BY: TN

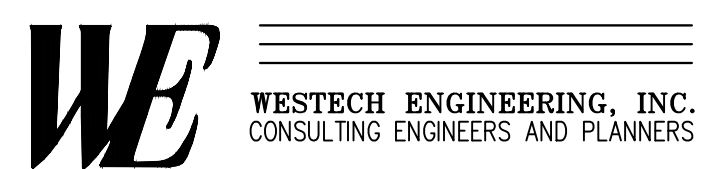
3470 Pleasant Place NE, Suite 120, Salem, OR 97301, 503.593.9999, mscengr@mscengr.com

© 2023, MSC ENGINEERS, INC. SINCE 1925

GRADING & DRAINAGE PLAN  
GRATING PACIFIC BUILDING C  
2775 N. FRONT ST.  
WOODBURN, OR 97071  
FOR: GRATING PACIFIC



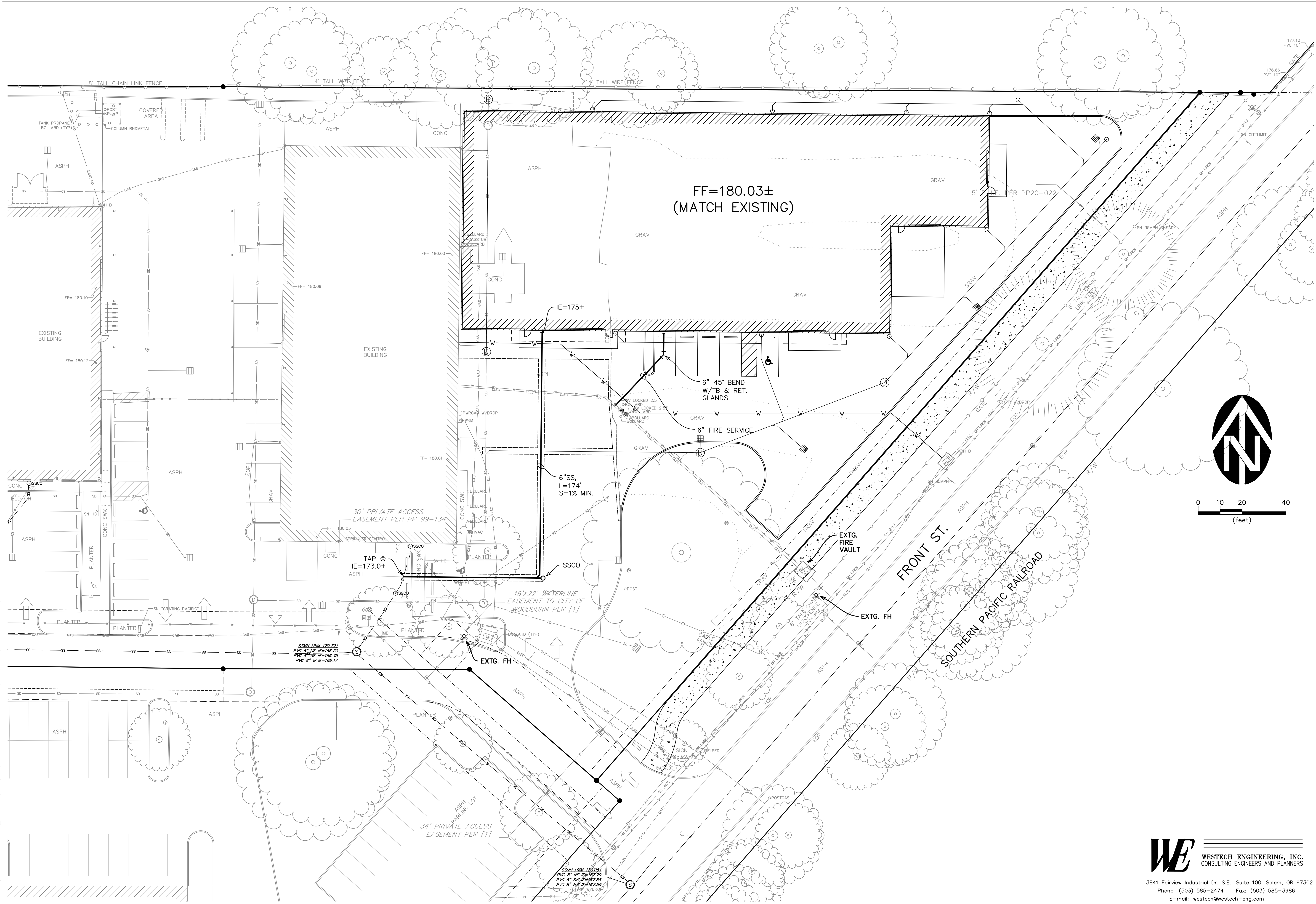
DWG. NO. C2.0 X of X



3841 Fairview Industrial Dr. S.E., Suite 100, Salem, OR 97302  
Phone: (503) 585-2474 Fax: (503) 585-3986  
E-mail: westech@westech-eng.com

230105

Dec 05, 2023 4:06:33 PM C:\WESTECH\DWG\MSC\GRATING PACIFIC\2673.2000.0\CIVIL\PLOTS\C3.0\UTILITY.DWG, TRAVIS MALE



JOB NO. 2673.2000.0 CHECKED BY: JW

DRAWN BY: TN

REVISION:

DATE: AUG. 2023

CONSULTING STRUCTURAL ENGINEERS

MSC ENGINEERS SINCE 1925

UTILITY PLAN

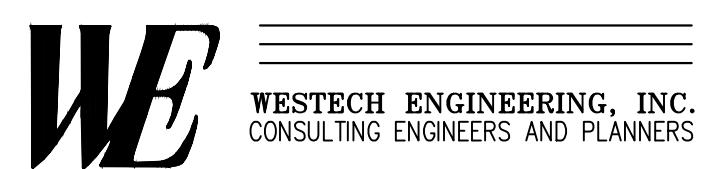
GRATING PACIFIC BUILDING C

2775 N. FRONT ST. WOODBURN, OR 97071 FOR: GRATING PACIFIC

DWG. NO. C3.0

X of X

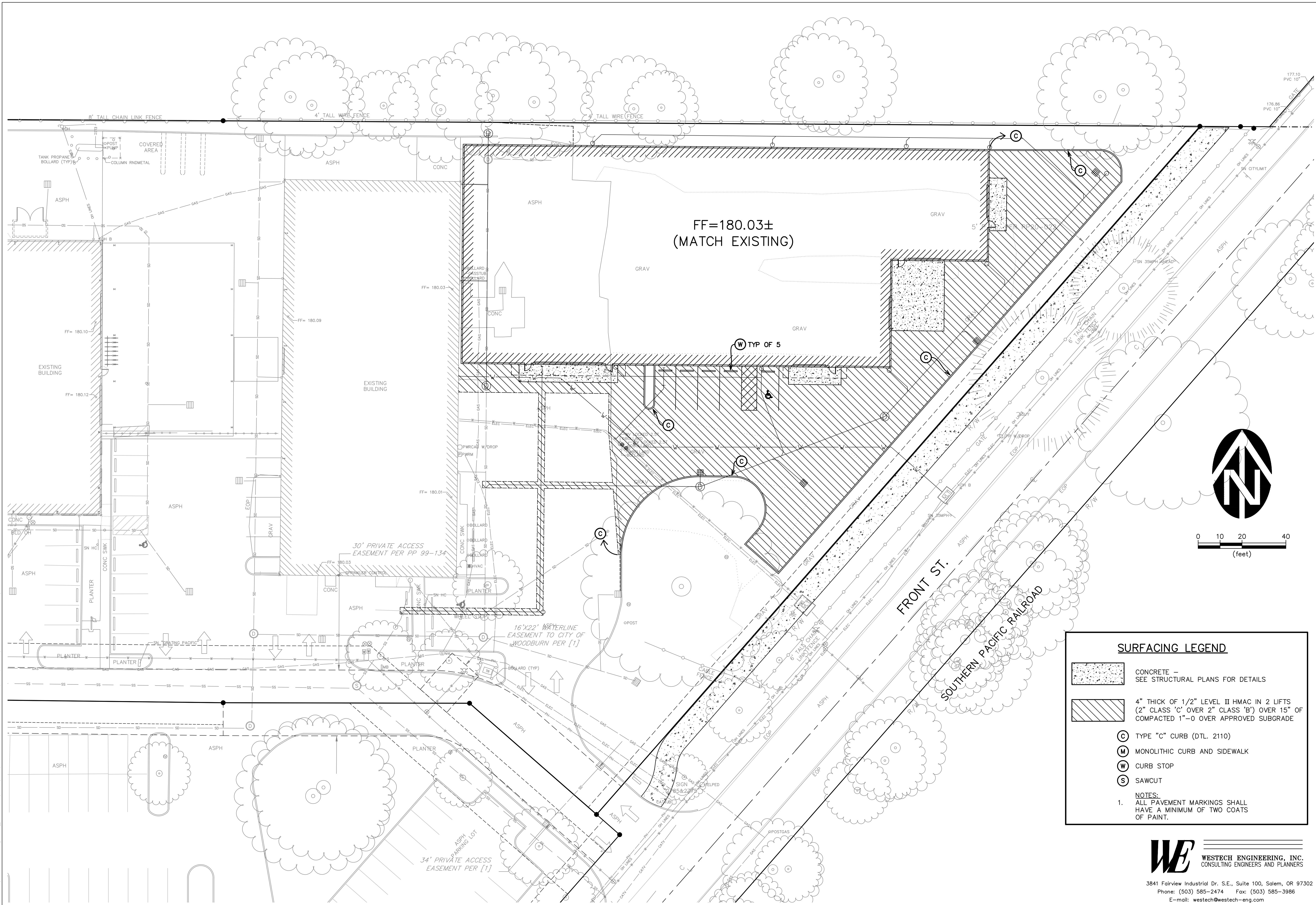
230105



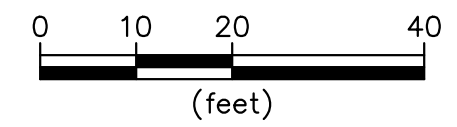
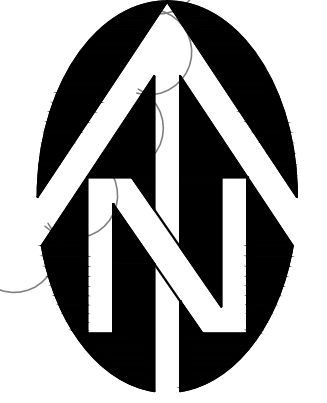
3841 Fairview Industrial Dr. S.E., Suite 100, Salem, OR 97302  
 Phone: (503) 585-2474 Fax: (503) 585-3986  
 E-mail: westech@westech-eng.com



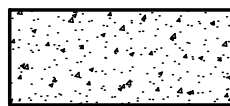
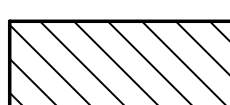




Dec 05, 2023 4:06:40 pm C:\WESTECH\DWG\MSC\GRATING PACIFIC-2673-2000.0\CIVIL\PLOTS\C4.0 SURFACING.DWG, TRAVIS MALE



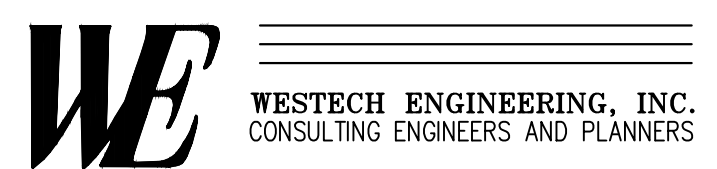
FF=180.03±  
(MATCH EXISTING)



**SURFACING LEGEND**

-  CONCRETE - SEE STRUCTURAL PLANS FOR DETAILS
-  4" THICK OF 1/2" LEVEL II HMAC IN 2 LIFTS (2" CLASS 'C' OVER 2" CLASS 'B') OVER 15" OF COMPACTED 1"-0 OVER APPROVED SUBGRADE
-  TYPE "C" CURB (DTL. 2110)
-  MONOLITHIC CURB AND SIDEWALK
-  CURB STOP
-  SAWCUT

NOTES:  
1. ALL PAVEMENT MARKINGS SHALL HAVE A MINIMUM OF TWO COATS OF PAINT.



3841 Fairview Industrial Dr. S.E., Suite 100, Salem, OR 97302  
Phone: (503) 585-2474 Fax: (503) 585-3986  
E-mail: westech@westech-eng.com

JOB NO. 2673.2000.0 CHECKED BY: JW  
DRAWN BY: TN DATE: AUG. 2023  
REVISION:

**MSC**  
CONSULTING  
STRUCTURAL  
ENGINEERS  
ENGINEERS  
SINCE 1925

**SURFACING PLAN**  
**GRATING PACIFIC BUILDING C**  
2775 N. FRONT ST.  
WOODBURN, OR 97071  
FOR: GRATING PACIFIC



DWG. NO.  
**C4.0**  
X of X  
230105