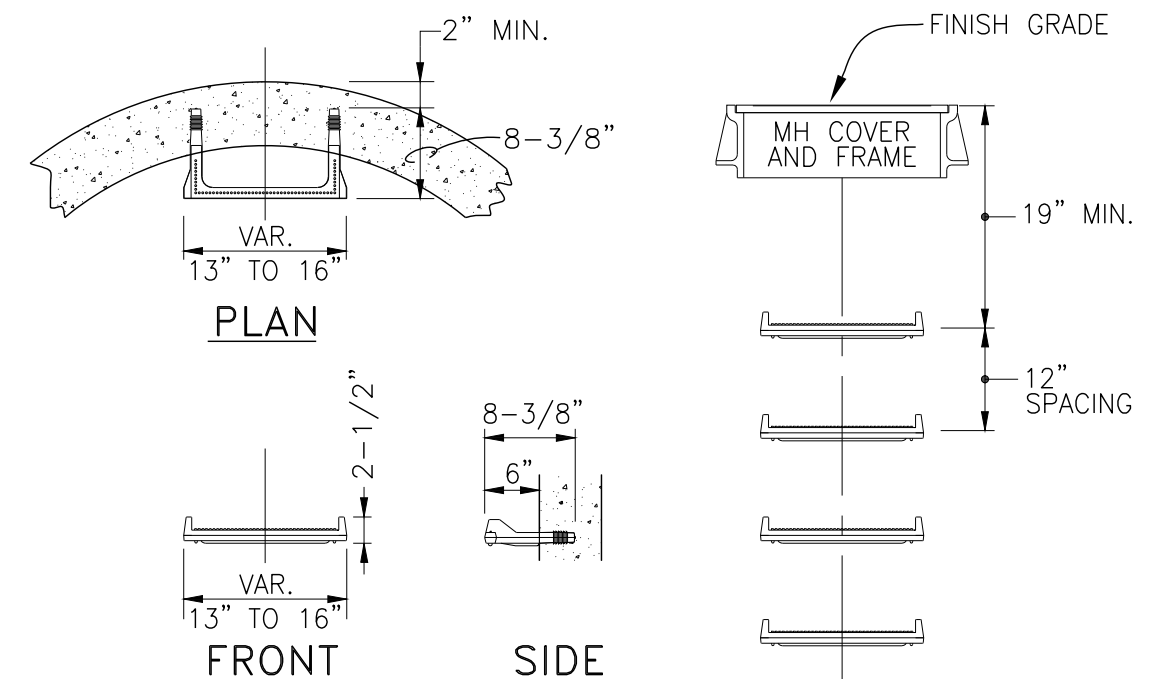
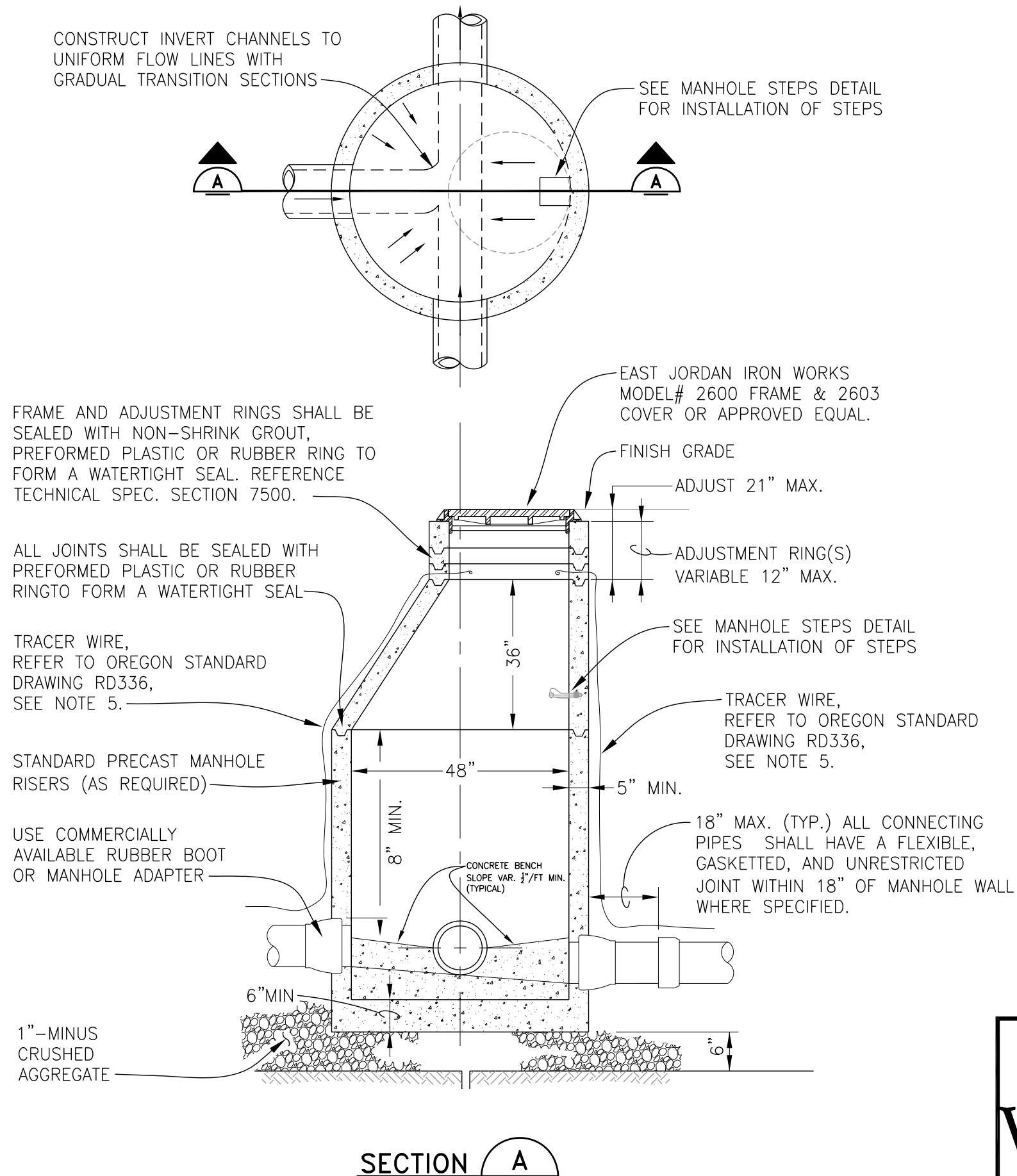
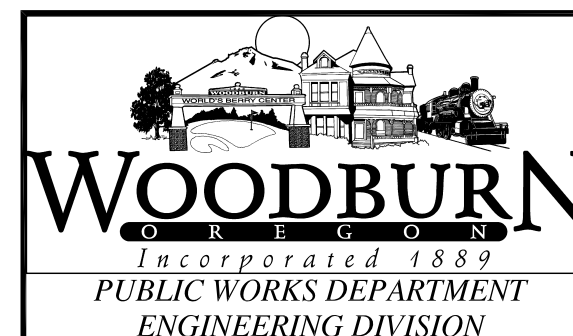


# NOTES:

1. ALL PRECAST SECTIONS SHALL CONFORM TO REQUIREMENTS OF ASTM C478.
2. STANDARD PRECAST MANHOLE SECTION DIAMETER SHALL BE 48". USE 42" IF SPECIFIED BY THE ENGINEER. MAXIMUM PIPE DIAMETER 24".
3. ALL CONNECTING PIPES SHALL HAVE A FLEXIBLE, GASKETTED, AND UNRESTRAINED JOINT WITHIN 18" OF MANHOLE WALL.
4. USE FLAT TOP FOR SHALLOW MANHOLE WHERE DIRECTED.
5. COIL AND SECURE TRACER WIRE IN MANHOLE TO NON CORROSIVE FASTENER, LEAVE ENOUGH FREE WIRE TO EXTEND 18" ABOVE TOP OF MANHOLE COVER.



MANHOLE STEPS  
DETAIL



## SANITARY SEWER MANHOLE

REV:	MAY 2023
SCALE:	NTS
DET No.	6510-3