

INSPECTION FREQUENCY

ACTIVE PERIOD	ON INITIAL DATE THAT LAND DISTURBANCE ACTIVITIES COMMENCES. WITHIN 24 HOURS OF ANY STORM EVENT. AT LEAST ONCE EVERY 14 DAYS REGARDLESS OF WHETHER STORMWATER RUNOFF IS OCCURRING.
INACTIVE PERIODS GREATER THAN 14 DAYS	THE INSPECTOR MAY REDUCE THE FREQUENCY OF INSPECTIONS IN ANY AREA OF THE SITE WHERE THE STABILIZATION STEPS IN SECTION 2.2.20 HAVE BEEN COMPLETED. TWICE THE FIRST MONTH , NO LESS THAN 14 CALENDAR DAYS APART, AND THEN ONCE A MONTH.
PERIODS WHICH THE SITE IS INACCESSIBLE	IF SAFE, ACCESSIBLE, AND PRACTICAL, INSPECTIONS MUST OCCUR DAILY AT A RELEVANT DISCHARGE POINT OR DOWNSTREAM LOCATION OF RECEIVING WATERBODY.
PERIODS WHICH CONSTRUCTION ACTIVITY IS SUSPENDED DUE TO INCLEMENT WEATHER	VISUAL MONITORING INSPECTIONS MAY BE TEMPORARILY SUSPENDED. IMMEDIATELY RESUME MONITORING UPON THAWING OR WHEN WEATHER CONDITIONS MAKE DISCHARGES LIKELY.
PERIODS DURING WHICH CONSTRUCTION IS ACTIVE BUR RUNOFF IS UNLIKELY	VISUAL MONITORING INSPECTIONS MAY BE REDUCED TO ONCE A MONTH. IMMEDIATELY UPON THAWING OR WHEN WEATHER CONDITIONS MAKE DISCHARGES LIKELY.

NARRATIVE DESCRIPTIONS

CERTIFIED STORMWATER INSPECTOR:
MAX ROSENTHAL, CWT A-1296 503-983-0889

RECEIVING WATERBODY:
MILL CREEK

NEAREST RAIN GAGE
WEATHER STATION AT WOODBURN CITY HALL
<https://www.wunderground/dashboard/pws/KORWOODB4>

PROJECT/DISTURBED AREA:
3.14 ACRES

EXISTING SITE CONDITIONS:
GRASS/WEED COVERED OPEN FIELD DRAINING TO DITCH INLET AT SE CORNER.

DEVELOPED CONDITIONS:
MUNICIPAL NEIGHBORHOOD PARK

NATURE OF CONSTRUCTION ACTIVITY.
CLEARING AND GRUBBING
CONSTRUCT STORM DRAINS/AREA DRAINS
GRADING-FILL AND CONTOUR
CONSTRUCT ASPHALT/CONCRETE/WOOD CHIP PATHS
CONSTRUCT PLAYGROUND
CONSTRUCT BASKETBALL
INSTALL IRRIGATION, PLANTINGS AND LAWN

TIMETABLE
WORK TO BEGIN IN MAY AND SUBSTANTIALLY COMPLETE BY THE END OF SEPTEMBER.

PLOT DATE: 4.15.2025

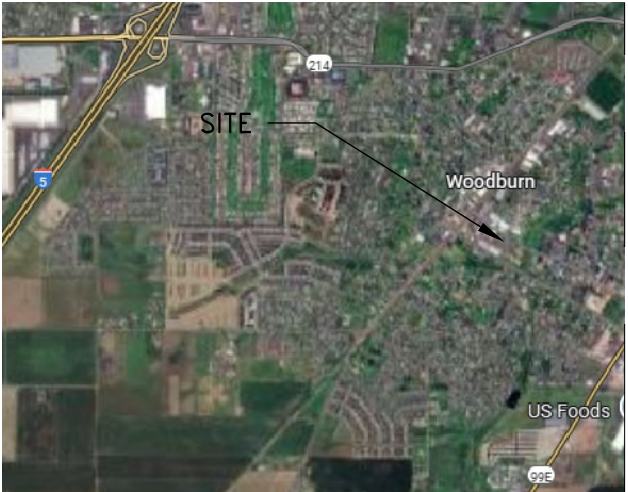
EROSION AND SEDIMENT CONTROL PLAN FOR
BOONES CROSSING PARK
1451 IRIS STREET
WOODBURN, OR 97071
SW ¼ SEC 18 T5S R1W WM
45°07'50.4"N 122°51'58.6"W

SHEET INDEX
EROSION AND SEDIMENT CONTROL PLANS

ESCP-1	COVER SHEET
ESCP-2	ESCP PLAN NOTES
ESCP-3	EXISTING CONDITIONS, BMPs & DETAILS

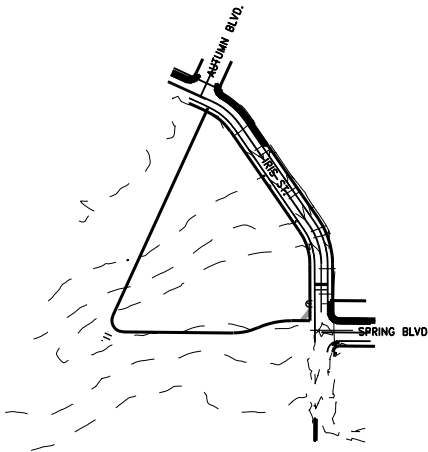
SUPPORT DOCUMENTS

BOONES CROSSING PARK CONSTRUCTION PLANS (PERMIT SET)
MISC DRAWINGS OF EXISTING STORMWATER FACILITY IN BOONES CROSSING PHASE 4 & 5.



VACINITY MAP (NTS)

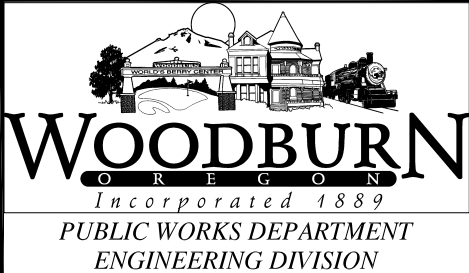
YEAR: 2025										
BMPs	MONTH:	5	6	7	8	9	10	11	12	
BIOBAGS		X	X	X	X	X	X	X	X	
CONCRETE TRUCK WASHOUT			X	X	X					
CONSTRUCTION ENTERANCE		X	X	X	X	X				
INLET PROTECTION		X	X	X	X	X	X	X	X	
PERMANENT SEEDING AND PLANTING		X	X	X	X	X	X	X	X	
SEDIMENT FENCING						X	X			
STORM DRAIN INLET PROTECTION		X	X	X	X	X	X	X	X	



SITE MAP (NTS)

SPILL PLAN

REFER TO OREGON DEQ'S FACT SHEET "WHAT TO DO WHEN YOU'VE HAD A SPILL" OR FOLLOW INSTRUCTIONS ON "HOW TO REPORT A SPILL" ON THE FOLLOWING WEBSITE:
[HTTPS://WWW.OREGON.GOV/DEQ/HAZARDS-AND-CLEANUP/ER/PAGES/HOW-TO-REPORT-A-SPILL.ASPX](https://www.oregon.gov/deq/HAZARDS-AND-CLEANUP/ER/PAGES/HOW-TO-REPORT-A-SPILL.ASPX)



PROJECT TITLE: BOONES CROSSING PARK BOONES CROSSING PARK			
DRAWING NAME: EROSION CONTROL PLAN COVER SHEET			
PROJ. NO: 2023-006-17	DESIGNED: PJG	PJG	
DWG. NO: ESCP-1	DRAWN BY: PJG	PJG	
DATE: 4/1/25	REVIEWED:	XX	
SCALE: NTS	APPROVED:	XX	

EROSION AND SEDIMENT CONTROL PLAN DRAWING NOTES:

1. ONCE KNOWN, INCLUDE A LIST OF THE CONTRACTORS THAT WILL ENGAGE IN CONSTRUCTION ACTIVITIES ON SITE, AND THE AREAS OF THE SITE WHERE THE CONTRACTOR(S) WILL ENGAGE IN CONSTRUCTION ACTIVITIES. REVISE THE LIST AS APPROPRIATE UNTIL PERMIT COVERAGE IS TERMINATED. (SECTION 4.4.C.1). IN ADDITION , INCLUDE A LIST OF ALL PERSONNEL (BY NAME AND POSITION)THAT ARE RESPONSIBLE FOR THE DESIGN, INSTALLATION AND MAINTENANCE OF STORMWATER CONTROL MEASURES (E.G. ESCP DEVELOPER, BMP INSTALLER (SEE SECTION 4.10), AS WELL AS THEIR INDIVIDUAL RESPONSIBILITIES. (SECTION 4.4.C.II)

2. VISUAL MONITORING INSPECTION REPORTS MUST BE MADE IN ACCORDANCE WITH DEQ 1200–C PERMIT REQUIREMENTS. (SECTION 6.5)

3. INSPECTION LOGS MUST BE KEPT IN ACCORDANCE WITH DEQ 1200–C PERMIT REQUIREMENTS. (SECTION 6.5Q)

4. RETAIN A COPY OF THE ESCP AND ALL REVISIONS ON SITE TO MAKE IT AVAILABLE ON REQUEST TO DEQ, AGENT, OR THE LOCAL MUNICIPALITY. (SECTION 4.7)

5. THE PERMIT REGISTRANT MUST IMPLEMENT THE ESCP. FAILURE TO IMPLEMENT ANY OF THE CONTROL MEASURES OR PRACTICES DESCRIBED IN THE ESCP IS A VIOLATION OF THE PERMIT. (SECTION 4.11)

6. THE ESCP MUST BE ACCURATE AND REFLECT THE CONDITIONS. (SECTION 4.8)

7. SUBMISSION OF ALL ESCP REVISIONS IS NOT REQUIRED. SUBMITTAL OF THE ESCP REVISIONS IS ONLY UNDER SPECIFIC CONDITIONS. SUBMIT ALL NECESSARY REVISIONS TO DEQ OR AGENT WITH IN 10 DAYS. (SECTION4.9)

8. SEQUENCE CLEARING AND GRADING TO THE MAXIMUM EXTENT POSSIBLE TO PREVENT EXPOSED INACTIVE AREAS FROM BECOMING A SOURCE OF EROSION. (SECTION 2.2.2)

9. CREATE SMOOTH SURFACES BETWEEN SOIL SURFACE AND EROSION AND SEDIMENT CONTROLS TO PREVENT STOEMWATER FROM BYPASSING CONTROLS AND PONDING. (SECTION 20203)

10. INSTALL PERIMETER SEDIMENT CONTROL, INCLUDING STORM DRAIN INLET PROTECTION PRIOR TO LAND DISTURBANCE. (SECTION 2.1.3)

11. CONTROL BOTH PEAK FLOW AND TOTAL STORMWATER VOLUME, TO MINIMIZE EROSION AT OUTLETS AND DOWNSTREAM CHANNELS AND STREAM BANKS. CHANNELS CHANNELS AND STREAM BANKS. (SECTIONS 2.1.1 AND 2.2.16)

12. CONTROL SEDIMENT AS NEEDED ALONG PERIMETER AND AT ALL OPERATIONAL INTERNAL STORM DRAIN INLETS DURING CONSTRUCTION BOTH INTERNALLY AND AT THE BOUNDARY. (SECTIONS 2.2.6 AND 2.2.13)

13. ESTABLISH CONCRETE TRUCK AND OTHER CONCRETE EQUIPMENT WASHOUT AREAS BEFORE BEGINNING CONCRETE WORK, (SECTION 2.2.14)

14. APPLY TEMPORARY AND/OR PERMANENT SOIL STABILIZATION MEASURES IMMEDIATELY ON ALL DISTURBED AREAS AS GRADING PROGRESSES. TEMPORARY OR PERMANENT STABILIZATION MEASURES ARE NOT REQUIRED FOR AREAS THAT ARE INTENDED TO BE LEFT UNVEGETATED, SUCH AS DIRT ACCESS ROADS OR UTILITY POLE PADS. (SECTIONS 2.2.20 AND 2.2.21)

15. ESTABLISH MATERIAL AND WASTE STORAGE AREAS, AND OTHER NON–STORMWATER CONTROLS. (SECTION 2.3.7)

16. KEEP WASTE CONTAINER LIDS CLOSED WHEN NOT IN USE AND CLOSE LIDS AT END OF THE BUSINESS DAY FOR THE CONTAINERS THAT ARE ACTIVELY USED THROUGHOUT THE DAY. FOR WASTE CONTAINERS THAT DO NOT HAVE LIDS, PROVIDE EITHER (1) COVER(E.G. TARP,PLASTIC SHEETING, TEMPORARY ROOF) TO PREVENT EXPOSURE OF WASTE TO PRECIPITATION, OR (2_ A SIMILARLY EFFECTIVE MEANS DESIGNED TO THE DISCHARGE OF POLLUTANTS (E.G. SECONDARY CONTAMINANT). (SECTION 2.3.7)

17. PREVENT TRACKING OF SEDIMENT ONTO PUBLIC ROADS USING BMPS SUCH AS: CONSTRUCTION ENTRANCE, AND EXITS, AND PARKING AREAS, GRAVEL ALL UNPAVED ROADS LOCATED , OR USE AN EXIT TIRE WASH. THESE BMPS MUST BE IN PLACE PRIOR TO LAND–DISTURBING ACTIVITY. (SECTION 2.2.7)

18. WHEN TRUCKING SATURATED SOIL FROM THE SITE, EITHER USE WATER TIGHT TRUCKS OR DRAIN OR DRAIN LOADS ON SITE, (SECTION2.2.7.F)

19. CONTROL PROHIBITED DISCHARGES FROM LEAVING THE CONSTRUCTION SITE, I.E. CONCRETE WASH–OUT, WASTEWATER FROM CLEANOUT OF STUCCO, PAINT, AND CURING COMPOUNDS. (SECTIONS 1.5 AND 2.3.9)

20. PREVENT SOIL COMPACTION IN AREAS WHERE POST–CONSTRUCTION INFILTRATION FACILITIES ARE TO BE INSTALLED. SECTION 2.2.12)
21. USE BMPS TO PREVENT OR MINIMIZE STORMWATER EXPOSURE TO POLLUTANTS FROM SPILLS; VEHICLE AND EQUIPMENT FUELING,MAINTENANCE, AND STORAGE; OTHER CLEANING AND MAINTENANCE ACTIVITIES; AND WASTE HANDLING ACTIVITIES.THESE POLUTANTS INCLUDE , HYDRAULIC FLUID, AND OTHER OILS FROM VEHICLES AND MACHINERY AS WELL AS DERBIES, FERTILIZERS, PESTICIDES, AND HERBICIDES, PAINTS, SOLVENTS, CURING COMPOUNDS, AND ADHESIVES FROM CONSTRUCTION OPERATIONS. (SECTIONS 2.2.15 AND 2.3)

22. PROVIDE A DEWATERING PLAN FOR ACCUMULATED WATER FROM PRECIPITATION AND UNCONTAMINATED GROUND WATER SEEPAGE DUE TO SHALLOW EXCAVATION ACTIVITIES. (SECTION 2.4).

23. IMPLEMENT THE FOLLOWING BMPS WHEN APPLICABLE: WRITTEN SPILL PREVENTION AND RESPONSE PROCEDURES, EMPLOYEE TRAINING ON SPILL PREVENTION, AND PROPER DISPOSAL PROCEDURES, SPILL KITS IN ALL VEHICLES AND MACHINERY, MATERIAL DELIVERY AND STORAGE CONTROLS, TRAINING AND SIGNAGE AND COVERED STORAGE AREAS FOR WASTE AND SUPPLIES. (SECTION 2.3)

24. USE WATER,SOIL–BINDING AGENT OR OTHER DUST CONTROL TECHNIQUE AS NEEDED TO AVOID WIND–BLOWN SOIL. (SECTION2.2.9)

25. THE APPLICATION RATE OF FERTILIZERS USED TO REESTABLISH VEGETATION MUST FOLLOW MANUFACTURERS RECOMMENDATIONS TO MINIMIZE NUTRIENT RELEASE TO SURFACE WATERS. EXERCISE CAUTION WHEN USING TIME–RELEASE FERTILIZERS WITHIN ANY WATER WAY RIPARIAN ZONE. (SECTION 2.3.5)

26. TEMPORARILY STABILIZE SOILS AT THE END OF THE SHIFT BEFORE HOLIDAYS AND WEEKENDS. IF NEEDED, THE REGISTRANT IS RESPONSIBLE AT ALL TIMES OF THE YEAR. (SECTION 2.2)

27. AS NEEDED BASIS ON WATER CONDITIONS, AT THE END OF EACH WORKDAY STOCKPILE MUST BE STABILIZED OR COVERED OR OTHER BMPS MUST BE IMPLEMENTED TO PREVENT DISCHARGE TO SURFACE WATERS OR CONVEYANCE SYSTEMS LEADING TO SURFACE WATERS. (SECTION 2.2.8)

28. SEDIMENT FENCE: REMOVE TRAPPED SEDIMENT BEFORE IT REACHES ON THIRD OF THE ABOVE GROUND FENCE HEIGHT AND BEFORE FENCE REMOVAL. (SECTION 2.1.5.B)

29. OTHER SEDIMENT BARRIERS (SUCH AS BIOBAGS): REMOVE SEDIMENT BEFORE IT REACHES TWO INCHES DEPTH ABOVE GROUND HEIGHT AND BEFORE BMP REMOVAL. SECTION 2.1.5.C)

30. CATCH BASIN: CLEAN BEFORE RETENSION CAPACITY HAS BEEN REDUCED BY FIFTY PERCENT. SEDIMENT BASINS ANS SEDIMENT TRAPS:REMOVE TRAPPED SEDIMENTS BEFORE BEFORE DESIGN CAPACITY HAS BEEN REDUCED BY FIFTY PERCENT AND AT COMPLETION OF PROJECT. (SECTION 2.1.5.D)

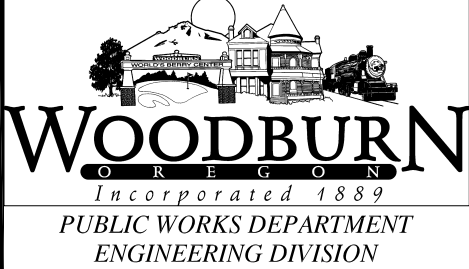
31. WITHIN 24 HOURS,SIGNIFICANT SEDIMENT THAT HAS LEFT THE CONSTRUCTION SITE, MUST BE REMEDIED. INVESTIGATE THE CAUSE OF THE SEDIMENT RELEASE, IMPLEMENT STEPS TO PREVENT A RECURRENCE OF THE DISCHARGE WITH IN THE SAME 24 HOURS.ANY IN–STREAM CLEANUP OF SEDIMENT SHALL BE PERFORMED ACCORDING TO HTE OREGON DEPARTMENT OF LANDS REQUIRED TIMEFRAME. (SECTION 2.2.19.A)

32. THE INTENTIONAL WASHING OF SEDIMENT INTO STORM SEWERS OR DRAINAGE MUST NOT OCCUR. VACUUMING OR DRY SWEEPING AND MATERIAL PICKUP MUST BE USED TO CLEANUP RELEASED SEDIMENTS. (SECTIONS 2.2.19)

33. DOCUMENT ANY PORTION(S) OF THE SITE WHERE LAND DISTURBING ACTIVITIES HAVE CEASED OR WILL BE TEMPORARILY INACTIVE FOR 14 OR MORE CALENDAR DAYS. SECTION 6.5.F

34. PROVIDE TEMPORARY STABILIZATION FOR THAT PORTION OF THE SITE WHERE CONSTRUCTION ACTIVITIES CEASE FOR 14 DAYS OR MORE WITH A COVERING OF BLOWN STRAW WITH A TACKIFIER, LOOSE STRAW, OR AN ADEQUATE COVERING COMPOST MULCH UNTIL WORK RESUMES ON THAT PORTION OF THE SITE. (SECTION 2.3.5)

35. DO NOT REMOVE TEMPORARY SEDIMENT CONTROL DEVICES UNTIL PERMANENT VEGETATION OR OTHER COVER OF EXPOSED AREAS IS ESTABLISHED. UNLESS NEEDED FOR LONG TERM USE FOLLOWING TERMINATION OF PERMIT COVERAGE. (SECTION 2.2.21)

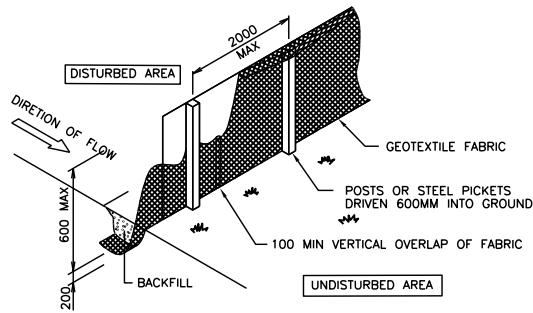
	PROJECT TITLE: BOONES CROSSING PARK		
	BOONES CROSSING PARK		
	DRAWING NAME: EROSION CONTROL PLAN		
	STANDARD ESCP DRAWING NOTES		
	PROJ. NO: 2023–006–17	DESIGNED: PJG	PJG
	DWG. NO: ESCP–2	DRAWN BY: PJG	XX
DATE: 2/12/20252/3/24		REVIEWED:	XX
SCALE: NTS		APPROVED:	XX

BUBBLE CALLOUTS:

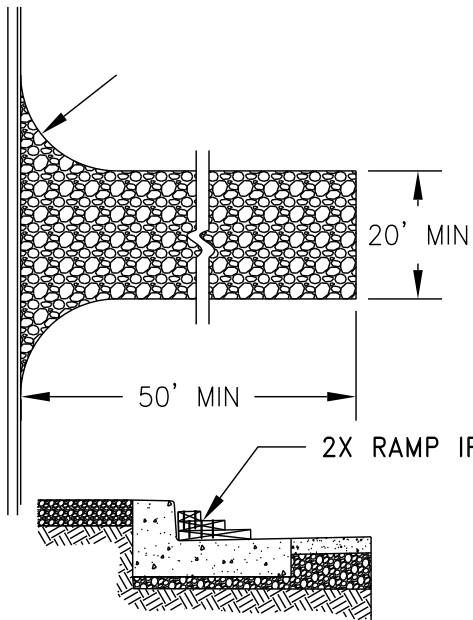
1. CONSTRUCT A CONSTRUCTION ENTRANCE MEETING THE MATERIAL REQUIREMENTS OF OREGON STANDARD CONSTRUCTION SPECIFICATIONS 2018 (OSCS 2018), SEC 00280.16a. ACTUAL LOCATION TO BE DETERMINED.
2. THE ENTRANCE SHALL BE MAINTAINED IN A CONDITION THAT WILL PREVENT TRACKING OR FLOWING OF SEDIMENT ONTO PUBLIC ROW
3. INSTALL AND MAINTAIN BIOFILTER BAGS MEETING THE REQUIREMENTS OF OSCS 2018 SECTION 00280.15(A) TYPE 3 AND INLET FILTER/PROTECTION BAGGS AT/IN CATCH BASINS AND INLETS AS INDICATED ON DRAWING.
4. INSTALL AND MAINTAIN SENTIMENT FENCE ALONG PERIMETER OF PROJECT MEETING THE MATERIALS REQUIREMENTS AND PERFORMANCE REQUIREMENTS OF THE OSCS 2018, SECTION 00280.16(a).
5. POSSIBLE STOCKPILE AREAS. STOCK PILES TO BE COVERED WITH PLASTIC SHEETS DURING INCLEMENT WEATHER.

NOTES:

1. WHEN THE THREE AREA DRAINS ARE INSTALLED AS PART OF THE PROJECT, THEY SHALL BE PROTECTED AS IN 3 ABOVE UNTIL LAWN IS ESTABLISHED.
2. ALL DISCHARGE STORM WATER FROM THE SITE PASSES THROUGH A SERIES OF FOUR (4) CONSECUTIVE STORM WATER FACILITIES ALONG SPRING BLVD BEFORE DISCHARGING INTO MILL CREEK.
3. ALL EROSION AND SEDIMENT CONTROLS TO BE IN PLACE FROM THE START OF THE PROJECT UNTIL COMPLETION.
4. SEE NOTES ON ESCP 2 FOR MORE DETAIL.
5. CONCRETE WASHOUT AND SANITARY FACILITIES (PORTA POTTY) PROVIDED AND LOCATED BY CONTRACTOR.

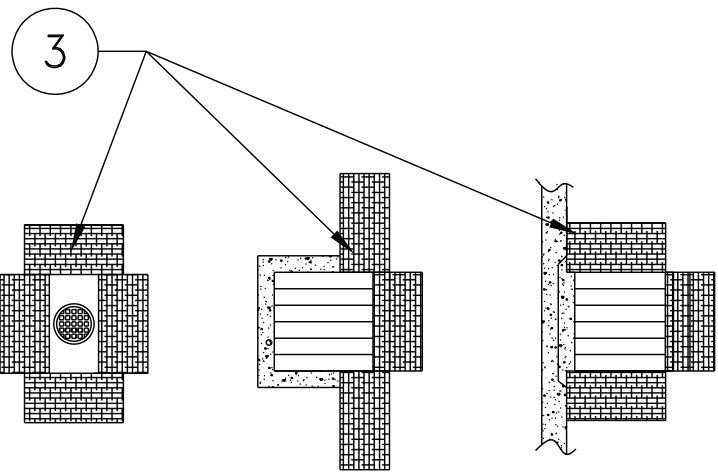


SEDIMENT FENCE DETAIL
NOT TO SCALE



SECTION B
NTS

CONSTRUCTION ENTERENCE
NTS



AREA DRAINS
WITHIN PROJECT
BOUNDRY

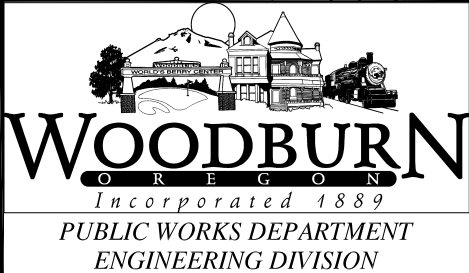
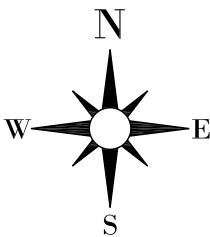
EXISTING DITCH
INLET WITHIN
PROJECT BOUNDRY

EXISTION
CATCH BASINS
IN ROW

PLOT DATE: 4.2.2025

SITE PLAN (EXISTING)

SCALE: 1:800



PROJECT TITLE: BOONES CROSSING PARK			
DRAWING NAME: SITE PLAN			
PROJ. NO:	2023-006-17	DESIGNED:	PJG
DWG. NO:	ESCP-3	DRAWN BY:	PJG
DATE:	12/3/24	REVIEWED:	XX
SCALE:	SHOWN	APPROVED:	XX