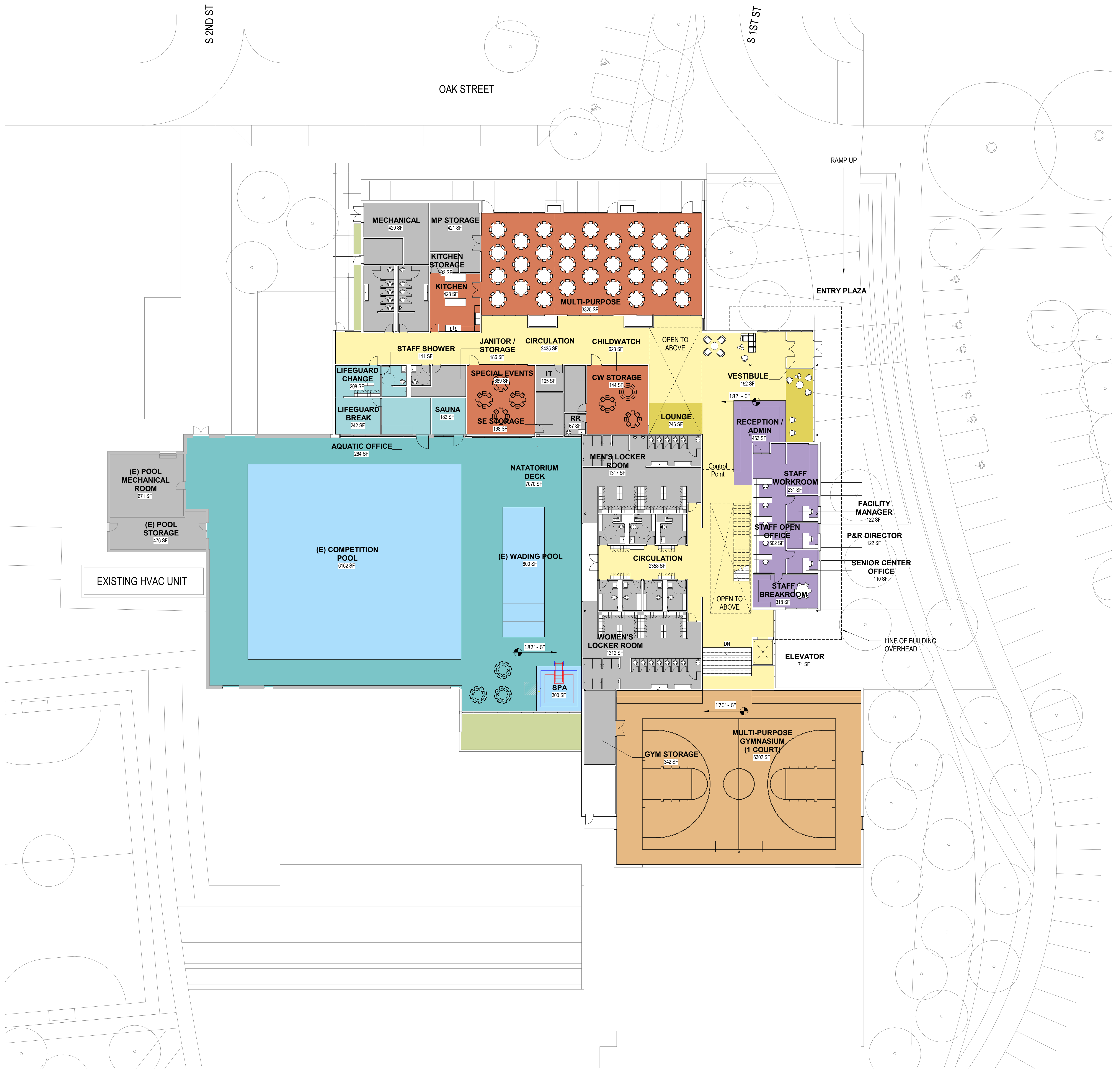


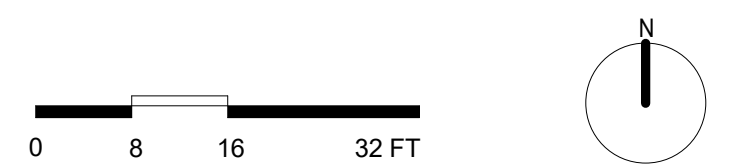
REDUCED FOOTPRINT - BASE PLAN



Level 01 - Base Plan

Existing Natatorium	15,290 sf
Addition	30,125 sf
Sub-total	45,415 sf

- AQUATICS
- AQUATICS
- RECREATION SPACES
- COMMUNITY SPACES
- LOUNGE
- ADMINISTRATIVE
- BUILDING SUPPORT
- CIRCULATION
- OUTDOOR AMENITY



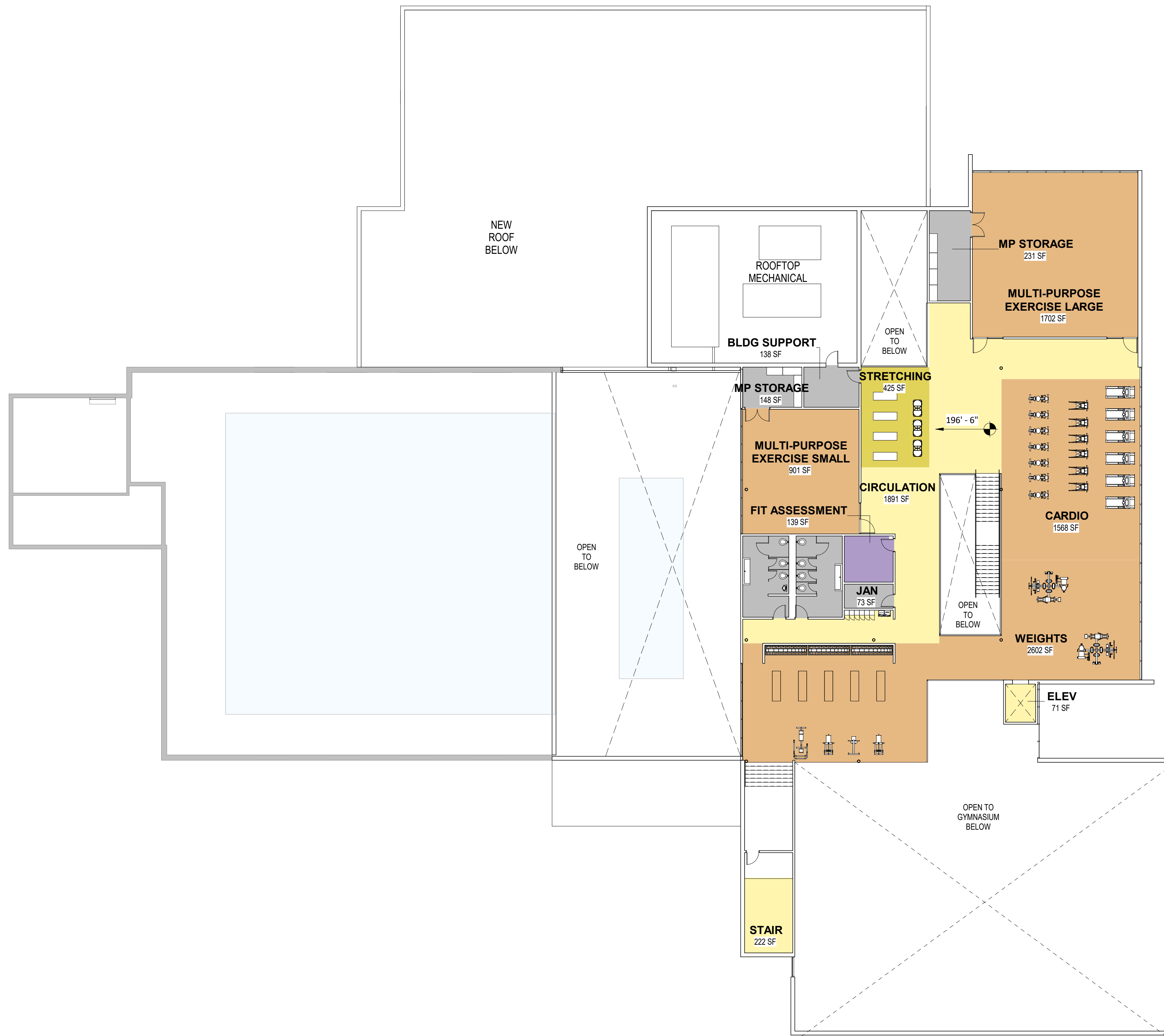
Woodburn Community Center

City Of Woodburn Oregon

02/26/20

opsis

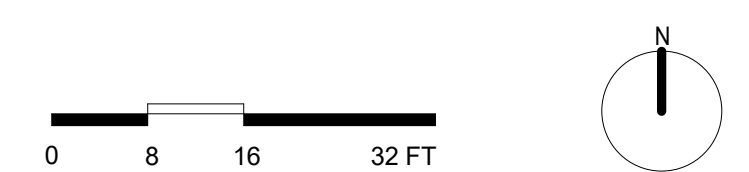
REDUCED FOOTPRINT - BASE PLAN



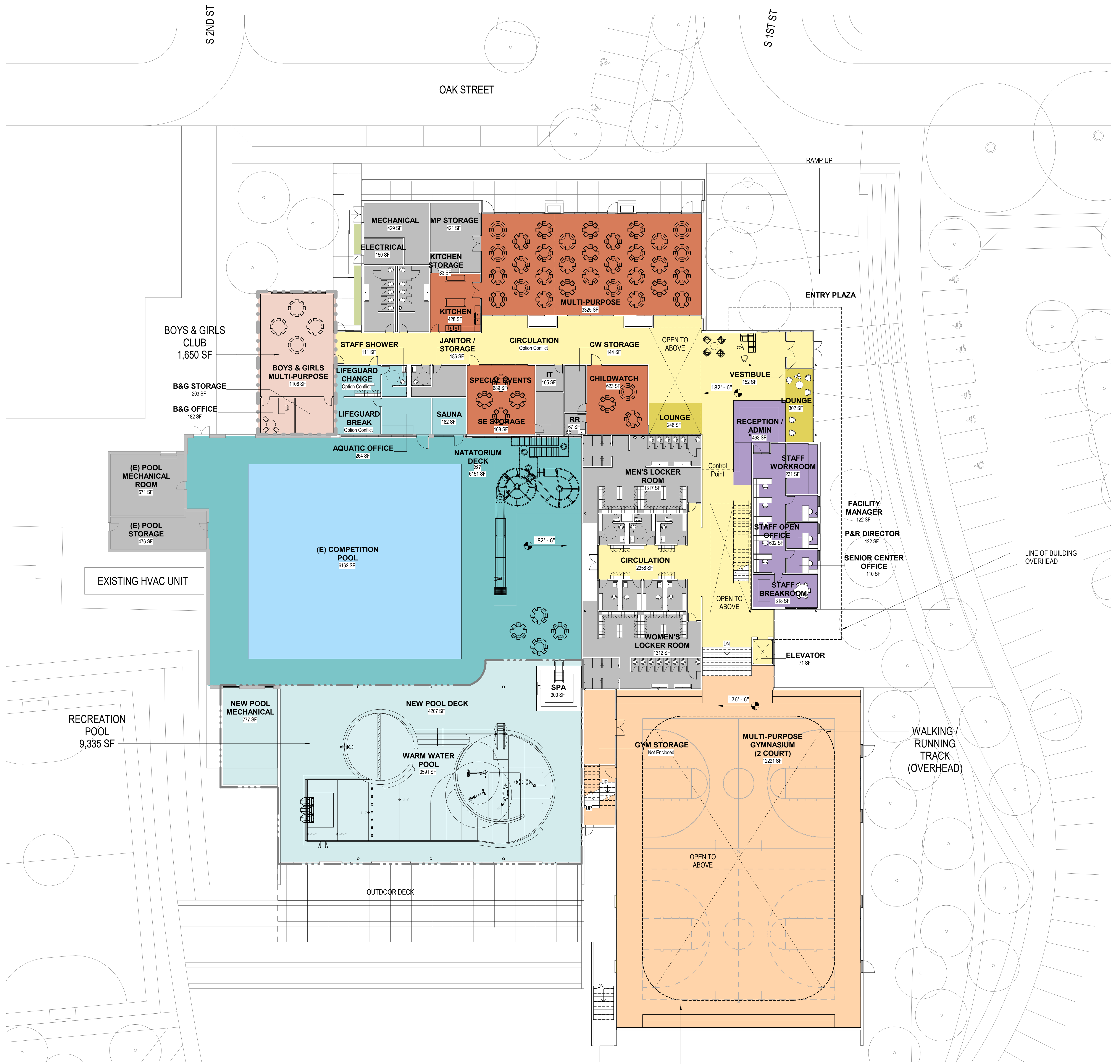
Level 02 - Base Plan

Addition 11,080 sf

- RECREATION SPACES
- LOUNGE
- ADMINISTRATIVE
- BUILDING SUPPORT
- CIRCULATION



REDUCED FOOTPRINT WITH ALTERNATES



Level 01 - Base Plan

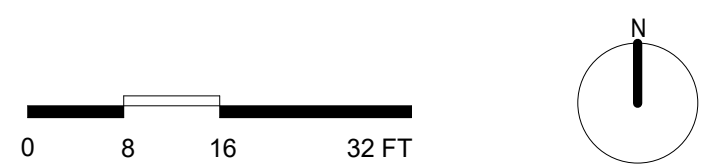
Existing Natatorium	15,290 sf
Addition	29,190 sf
Total	44,480 sf

Level 01 - Alternates

Boys & Girls Club	1,650 sf
Recreation Pool	9,300 sf
2nd Gym Court	6,140 sf

- AQUATICS
- AQUATICS
- RECREATION SPACES
- COMMUNITY SPACES
- LOUNGE
- ADMINISTRATIVE
- BUILDING SUPPORT
- CIRCULATION
- OUTDOOR AMENITY

2nd GYM COURT
6,140 SF



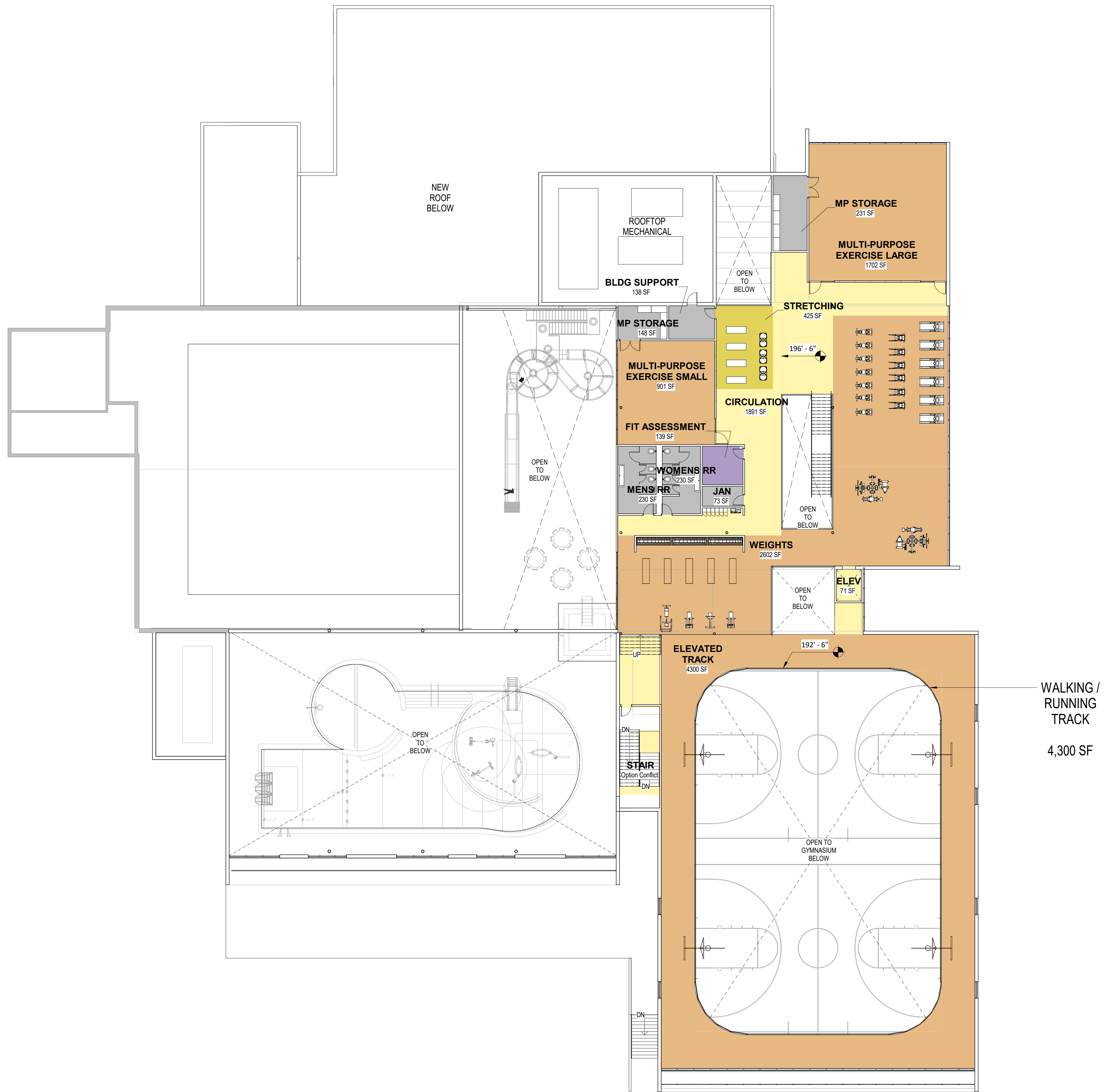
Woodburn Community Center

City Of Woodburn Oregon

02/26/20

opsis

REDUCED FOOTPRINT WITH ALTERNATES



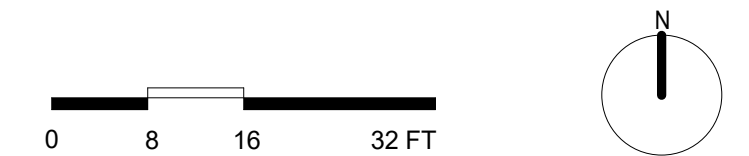
Level 02 - Base Plan

Addition 11,120 sf

Level 02 - Alternates

Walking / Running Track 4,300 sf

- RECREATION SPACES
- LOUNGE
- ADMINISTRATIVE
- BUILDING SUPPORT
- CIRCULATION



Woodburn Community Center

City Of Woodburn Oregon

02/26/20

opsis