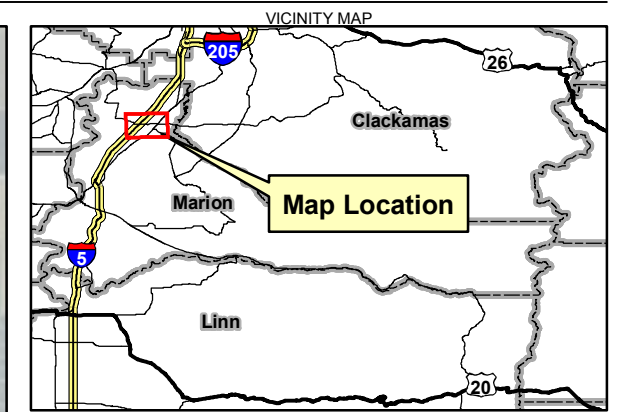
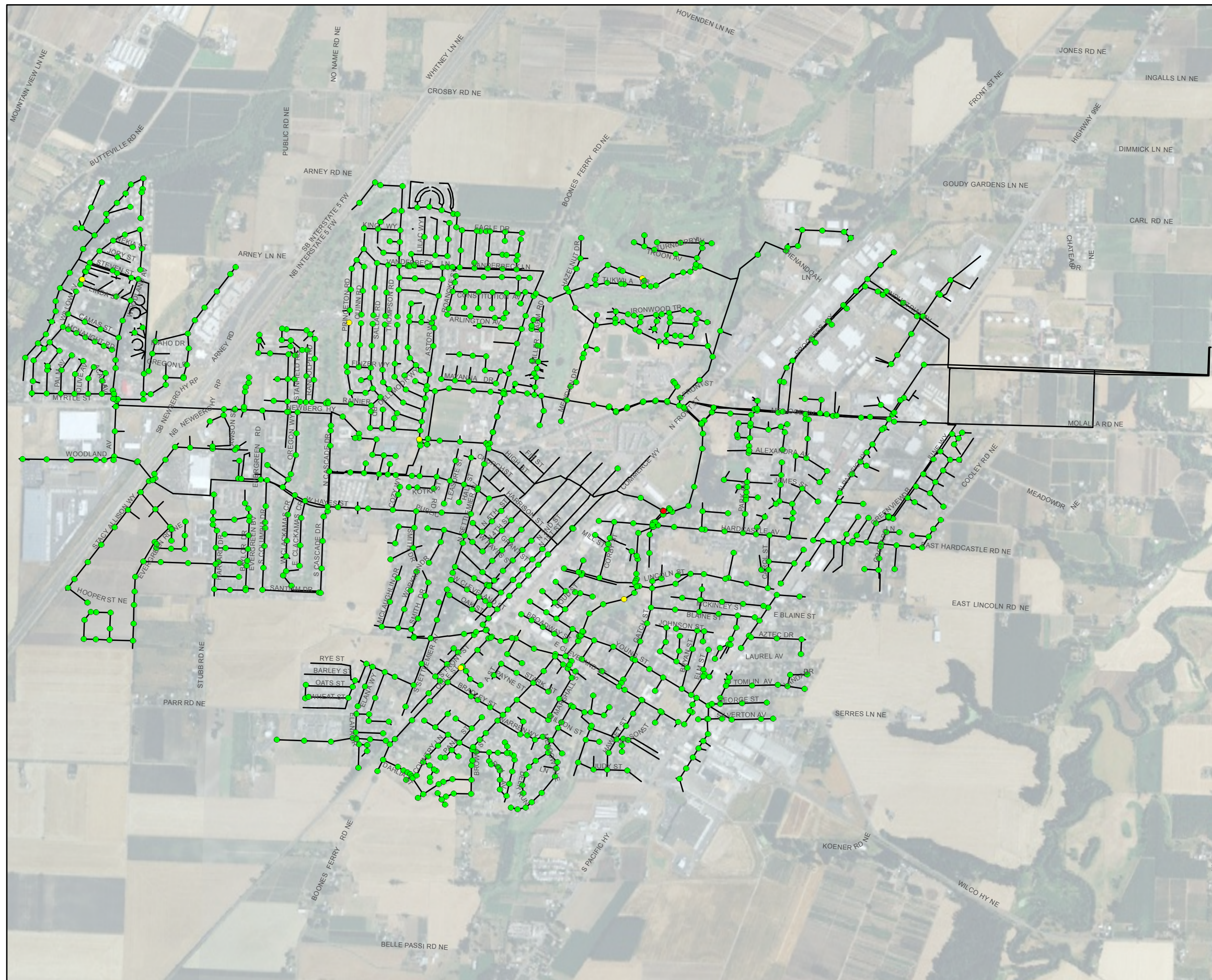


APPENDIX B

Collection System Condition Mapping



- LEGEND**
- Cover Condition**
- Broken (1)
 - Cracked (6)
 - Good (1291)
- Collection Sytem Pipe

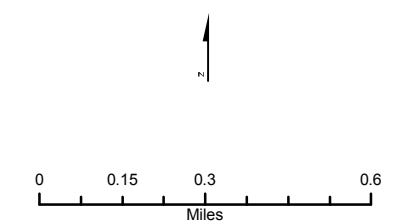
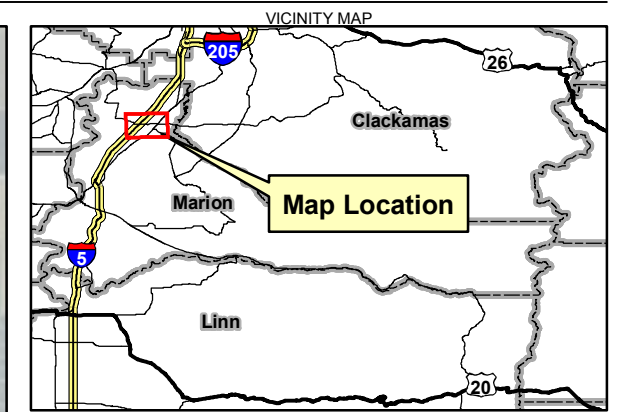
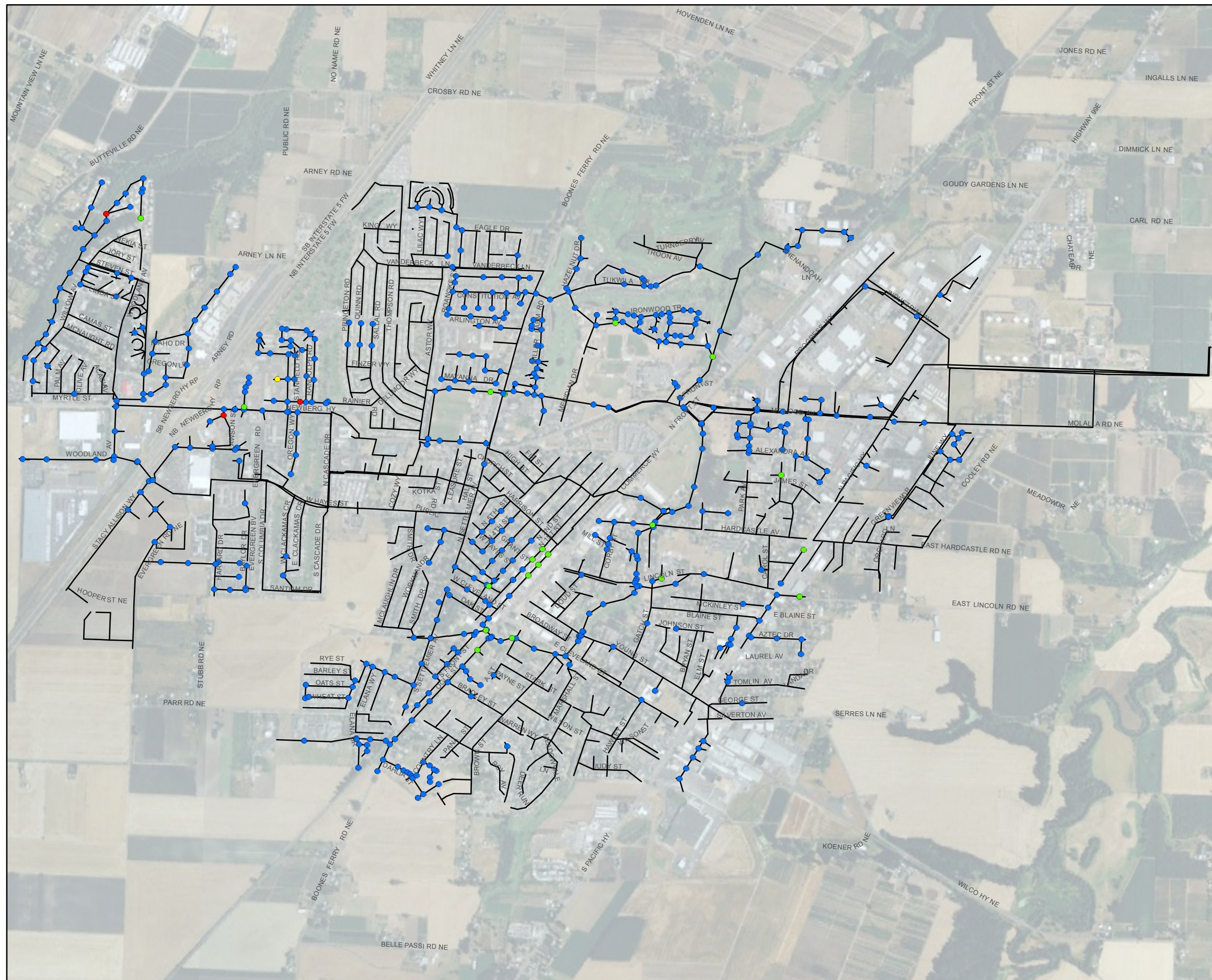


FIGURE B-1
CH2M Hill Survey MH Observations -
Cover
 Woodburn



- LEGEND**
- Corrosion**
- Exposed Aggregate (3)
 - Exposed Rebar (1)
 - Rough Surface (21)
 - None (504)
- Collection System Pipe

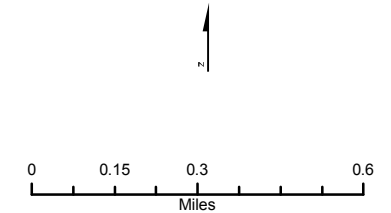
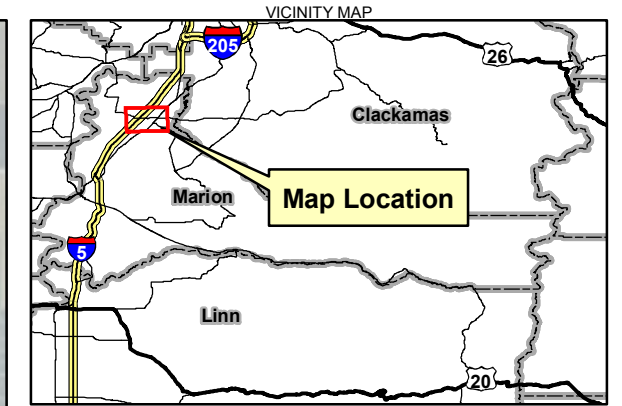
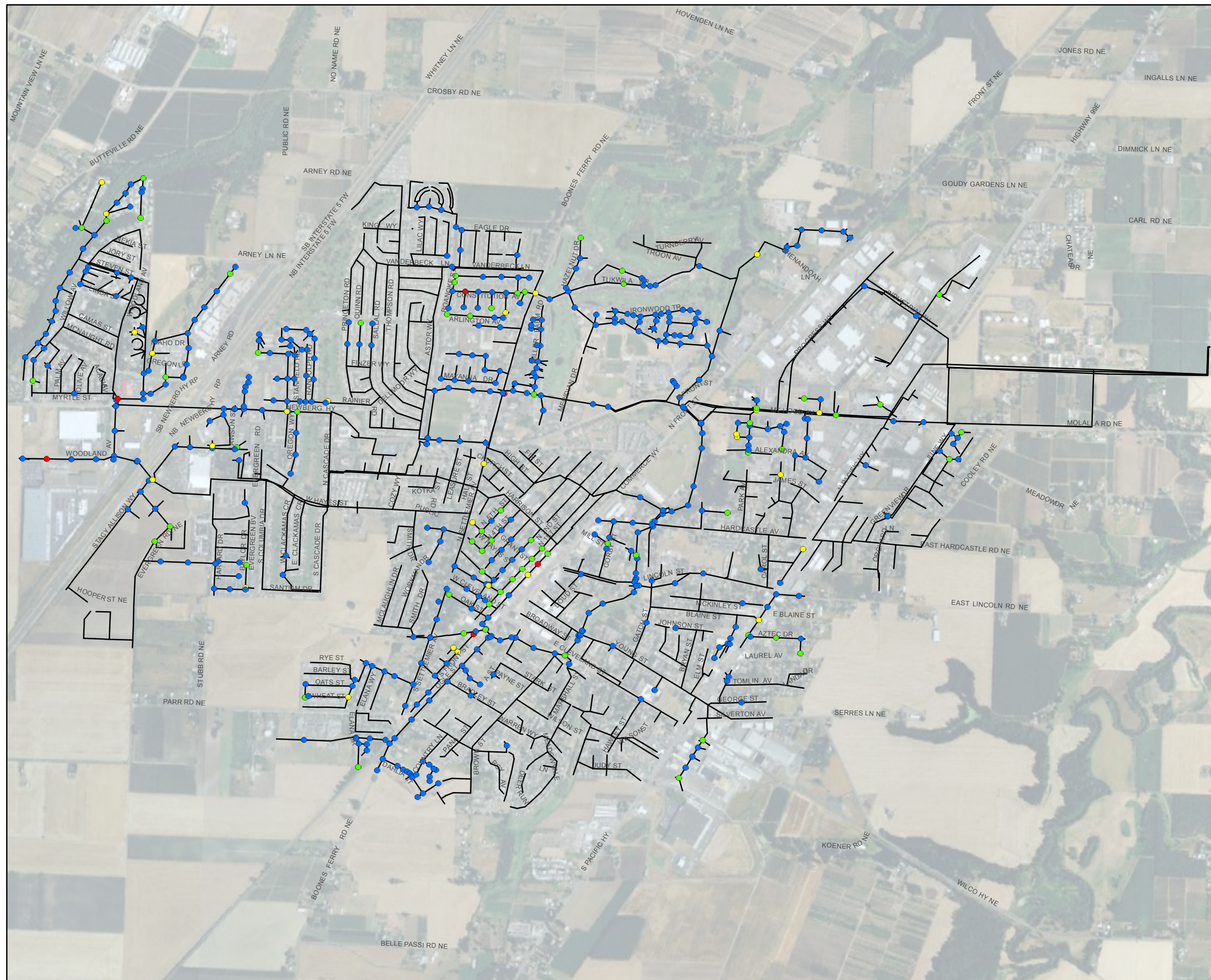


FIGURE B-2
CH2M Hill Survey MH Observations -
Corrosion
 Woodburn



- LEGEND**
- Debris**
- Heavy (6)
 - Medium (26)
 - Light (66)
 - None (442)
- Collection System Pipe

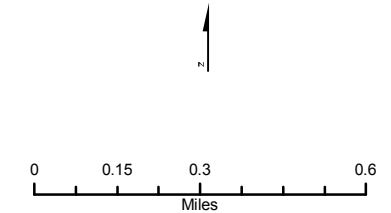
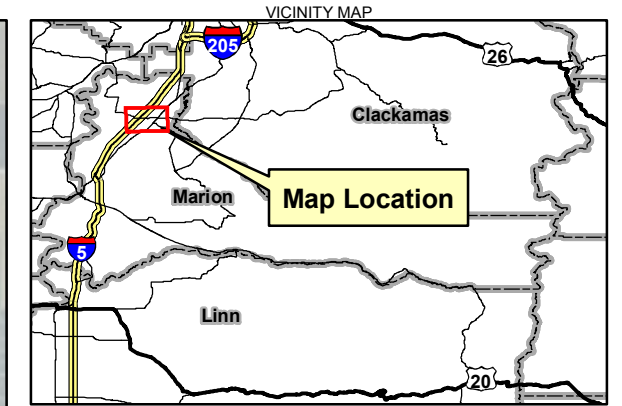
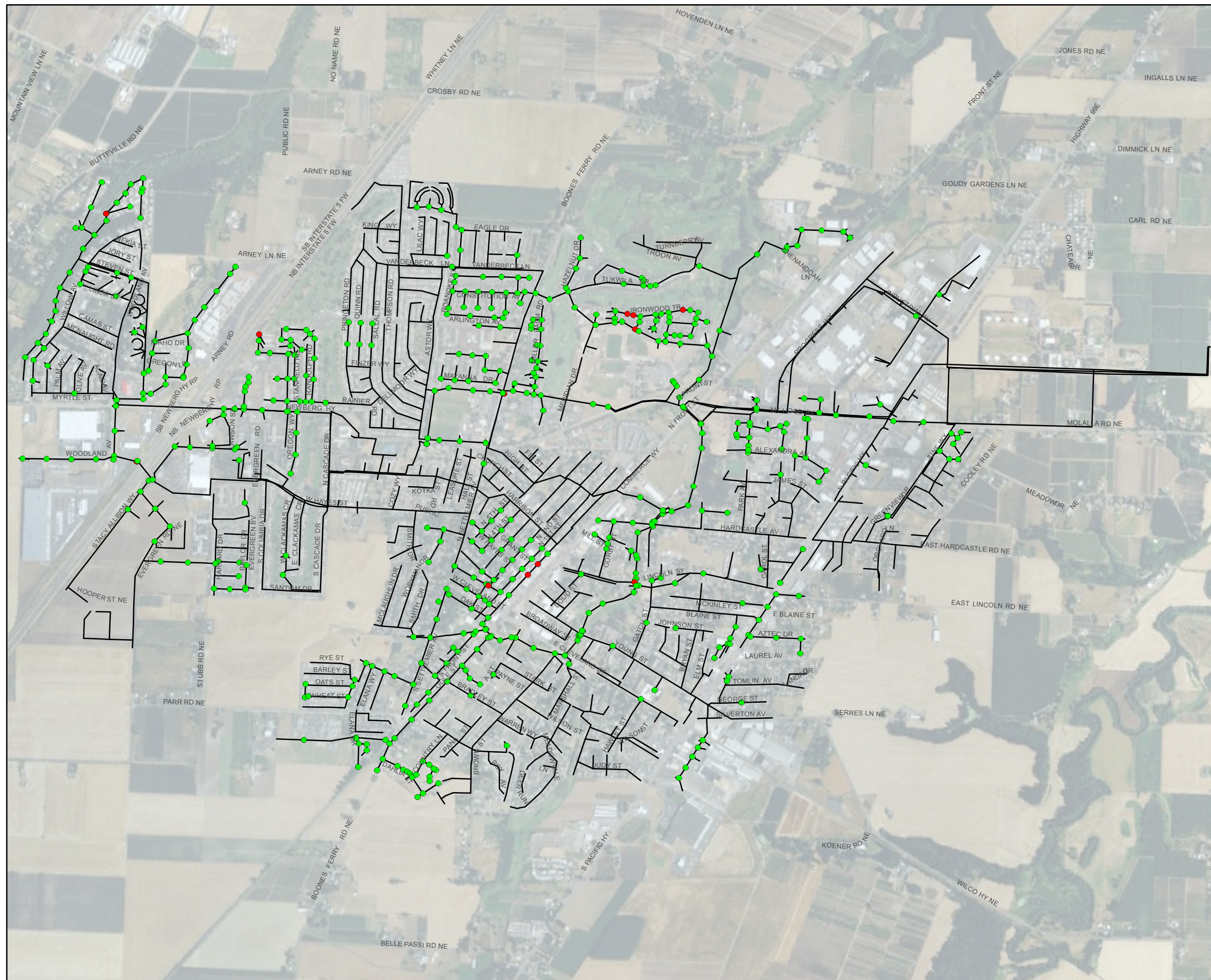


FIGURE B-3
CH2M Hill Survey MH Observations -
Corrosion
 Woodburn



- LEGEND**
- Invert Condition**
 - Damaged (12)
 - Smooth (527)
 - Collection System Pipe

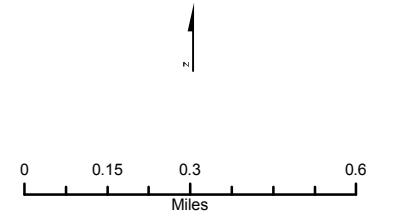
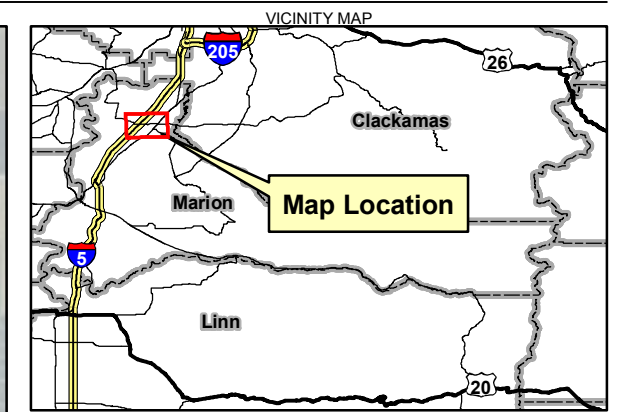
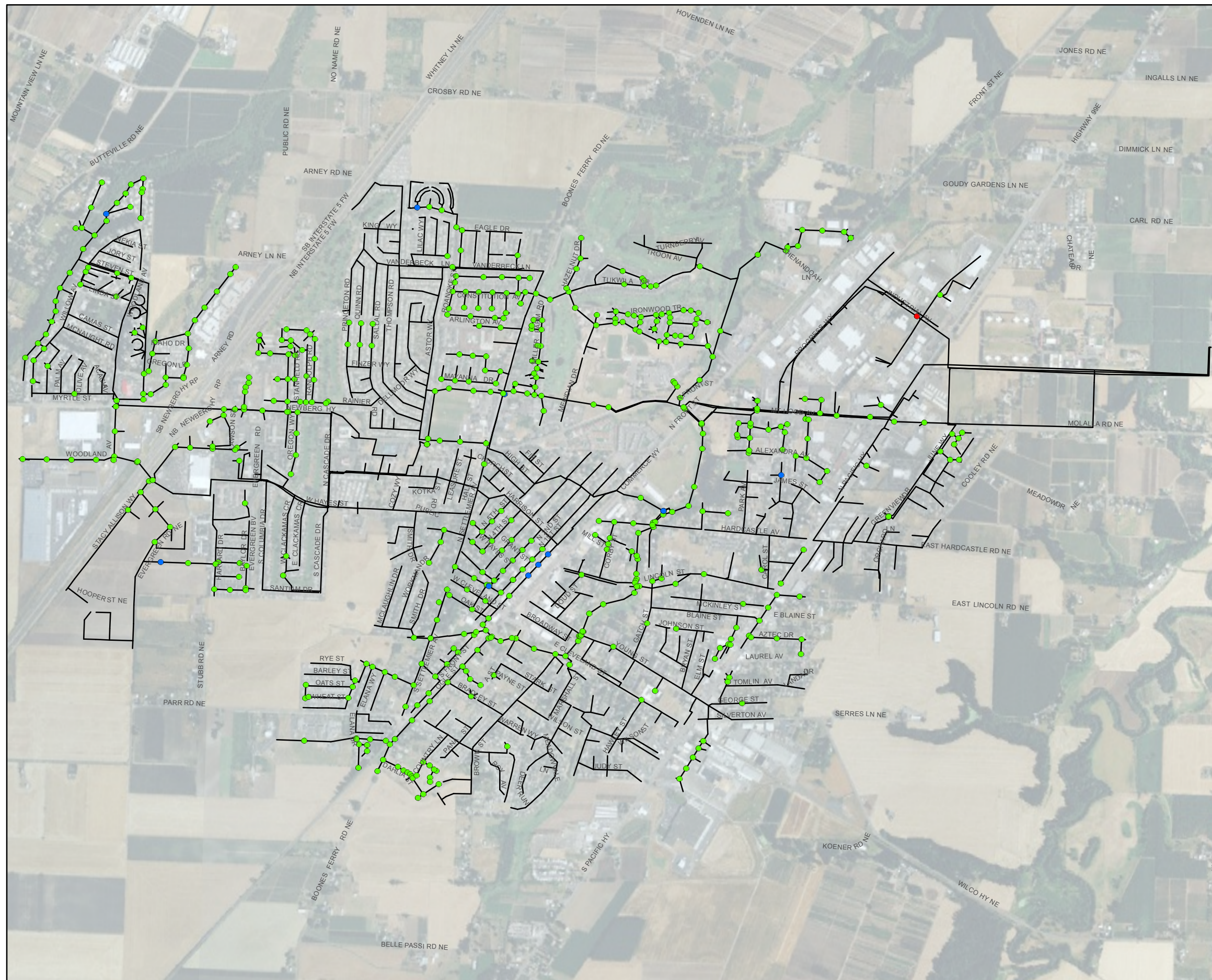


FIGURE B-4
CH2M Hill Survey MH Observations -
Invert
 Woodburn



- LEGEND**
- Barrel Condition**
- Good
 - Fair
 - Force Main
 - Collection System Pipe

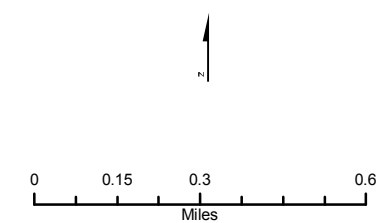
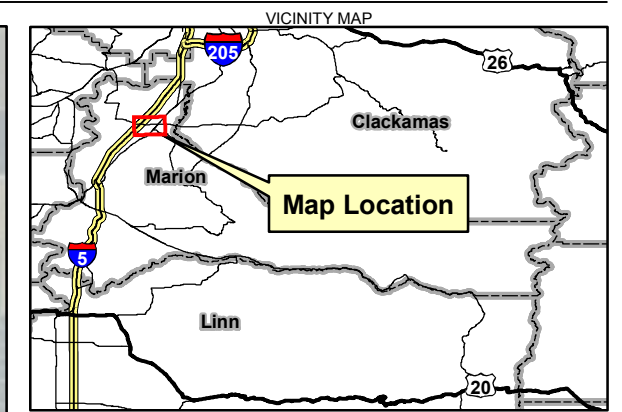
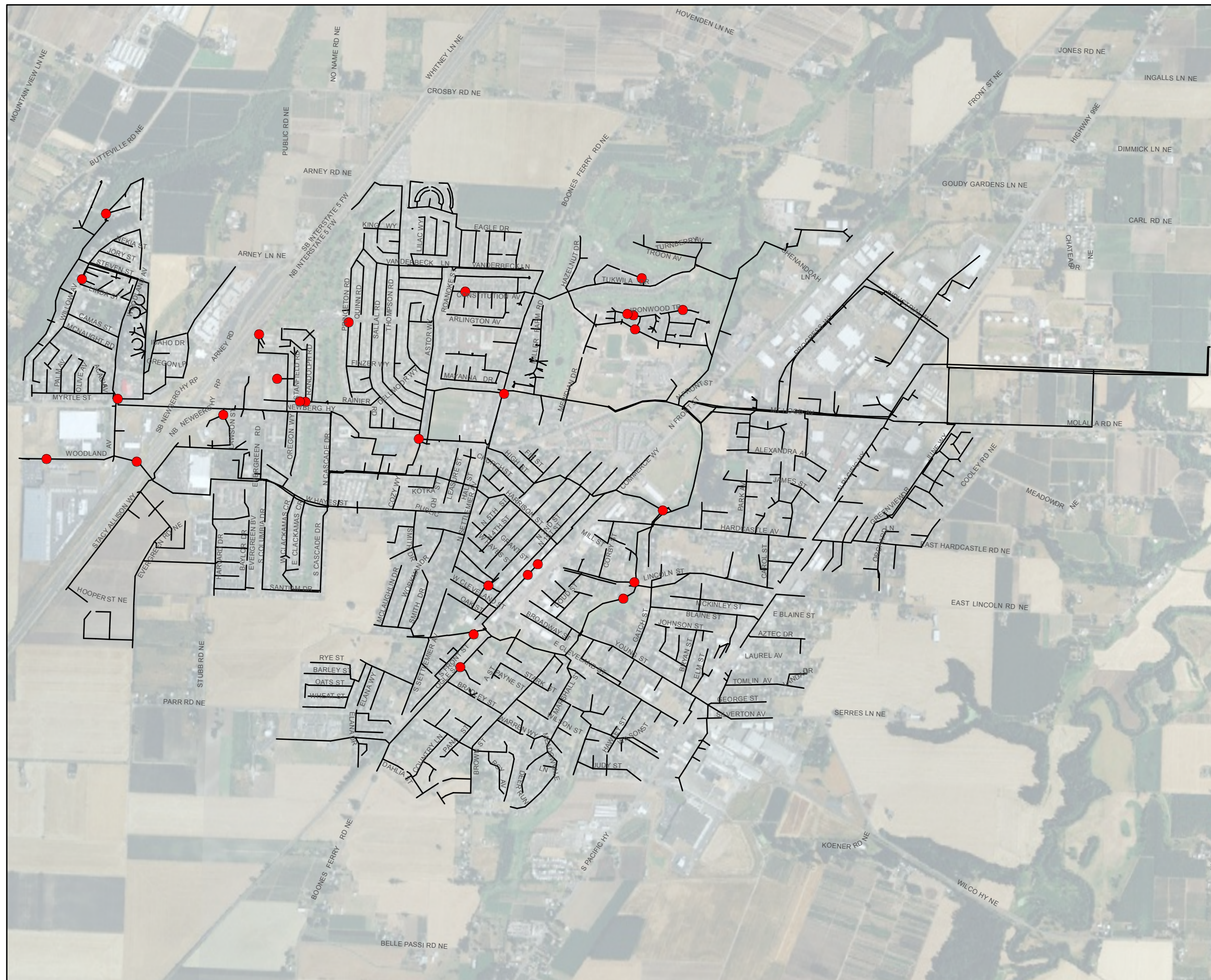


FIGURE B-5
CH2M Hill Survey MH Observations -
Barrel
 Woodburn



LEGEND
 ● Manhole
 — Collection System Pipe

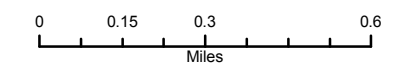
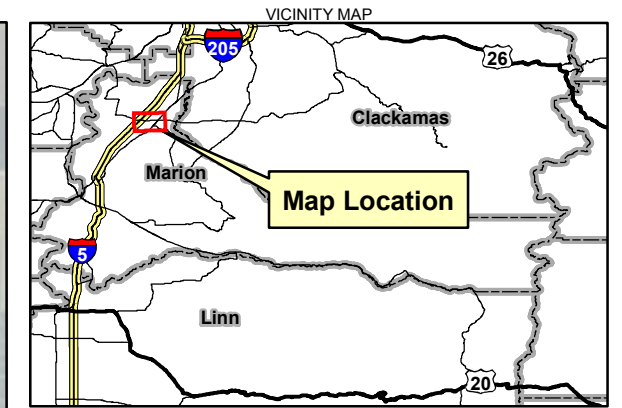


FIGURE B-6
"C" and "D" Rated Manholes
 Woodburn



- LEGEND**
- Design Point
 - Collection System Pipe
- Issue**
- Capacity
 - Capacity and Grade
 - Grade
 - Grade and Easement
 - Deteriorating
 - Frequent Maintenance

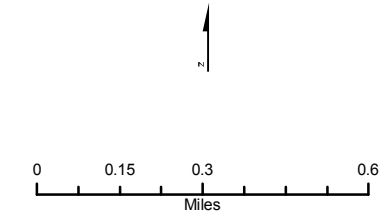


FIGURE B-7
Operation and Maintenance
Areas of Interest
 Woodburn